

Violoncello

Bach cantata 150

Adagio

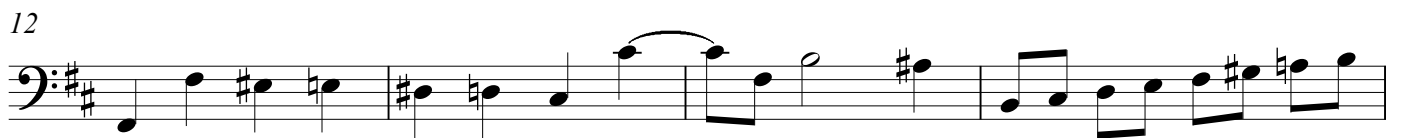
1.  Musical notation for measures 1-5. The staff is in bass clef with a key signature of two sharps (F# and C#) and a common time signature (C). It begins with a half rest, followed by a half note G2, a quarter note A2, and a quarter note B2. A fermata is placed over the G2. The next measure contains a half note C#3, a quarter note D3, and a quarter note E3. The third measure contains a quarter note F#3, a quarter note G3, a quarter note A3, and a quarter note B3. The fourth measure contains a quarter note C4, a quarter note D4, a quarter note E4, and a quarter note F#4. The fifth measure contains a quarter note G4, a quarter note A4, a quarter note B4, and a quarter note C5. A fermata is placed over the C5.

6  Musical notation for measures 6-10. Measure 6: quarter note G4, quarter note A4, quarter note B4, quarter note C5. Measure 7: quarter note D5, quarter note E5, quarter note F#5, quarter note G5. Measure 8: quarter note A5, quarter note B5, quarter note C6, quarter note B5. Measure 9: quarter note A5, quarter note G5, quarter note F#5, quarter note E5. Measure 10: quarter note D5, quarter note C5, quarter note B4, quarter note A4.

11  Musical notation for measures 11-14. Measure 11: quarter note G4, quarter note A4, quarter note B4, quarter note C5. Measure 12: quarter note D5, quarter note E5, quarter note F#5, quarter note G5. Measure 13: quarter note A5, quarter note B5, quarter note C6, quarter note B5. Measure 14: quarter note A5, quarter note G5, quarter note F#5, quarter note E5.

15  Musical notation for measures 15-18. Measure 15: quarter note G4, quarter note A4, quarter note B4, quarter note C5. Measure 16: quarter note D5, quarter note E5, quarter note F#5, quarter note G5. Measure 17: quarter note A5, quarter note B5, quarter note C6, quarter note B5. Measure 18: quarter note A5, quarter note G5, quarter note F#5, quarter note E5. The piece ends with a fermata over a whole note G4.

Violoncello



Violoncello

45



49

Adagio



3.



4



7



10



13



15



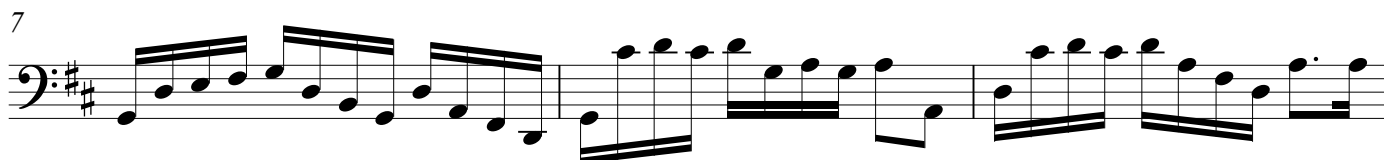
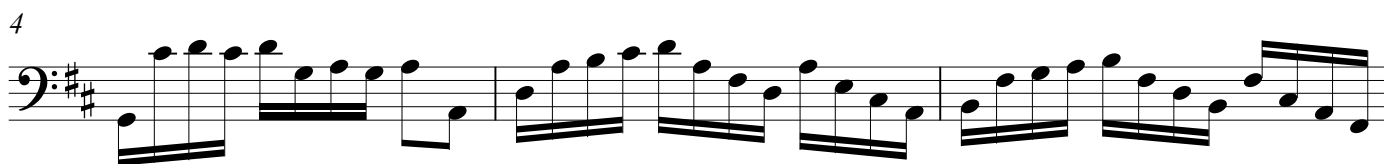
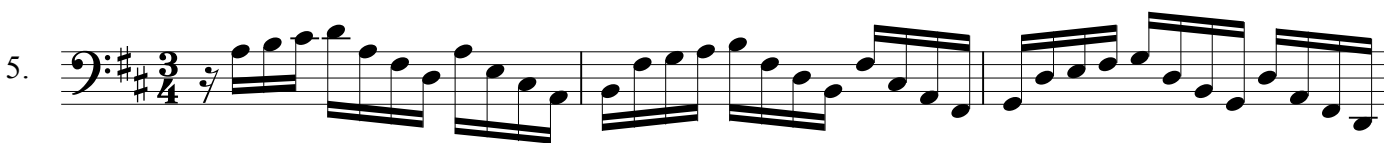
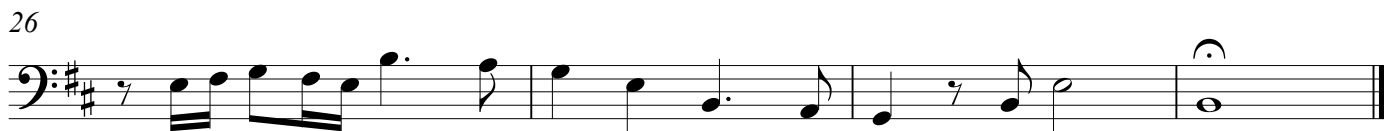
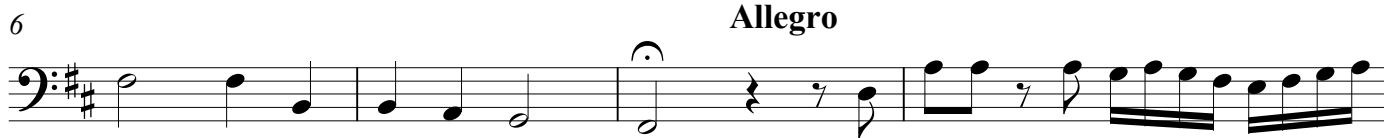
18



21

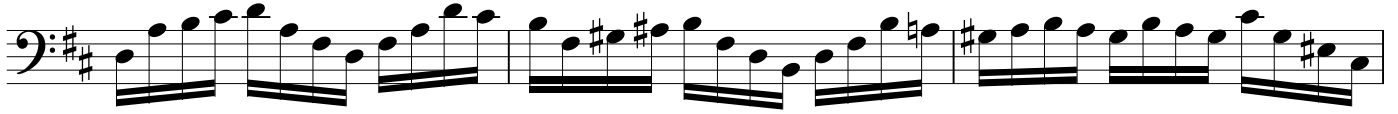


Andante



Violoncello

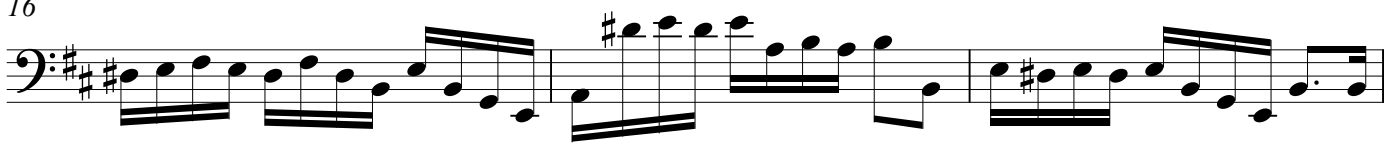
10



13



16



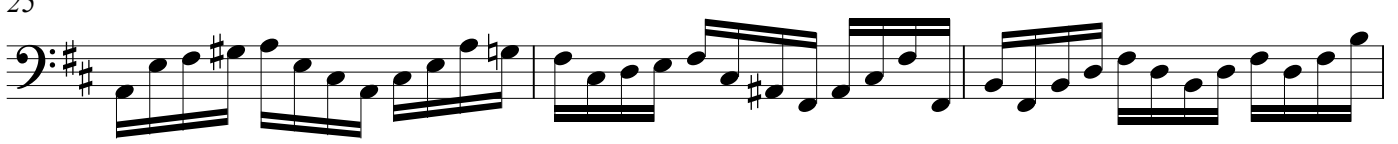
19



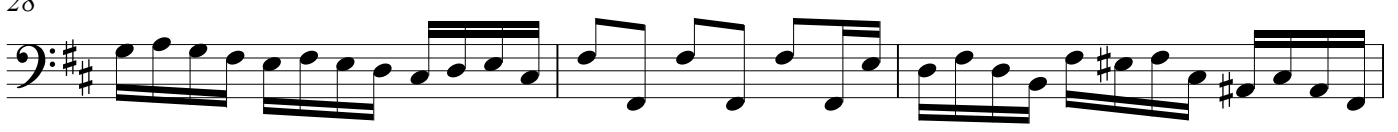
22



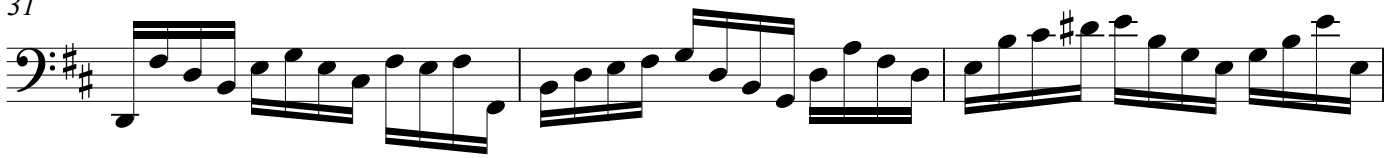
25



28



31



34

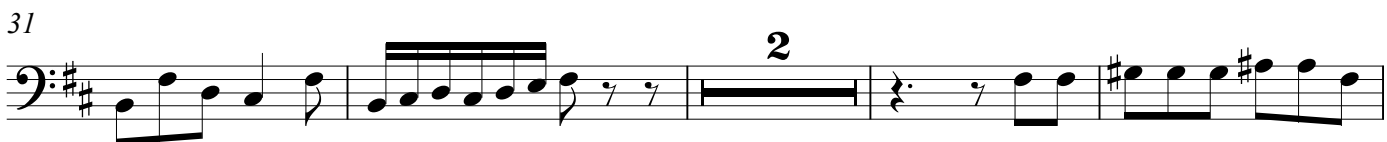
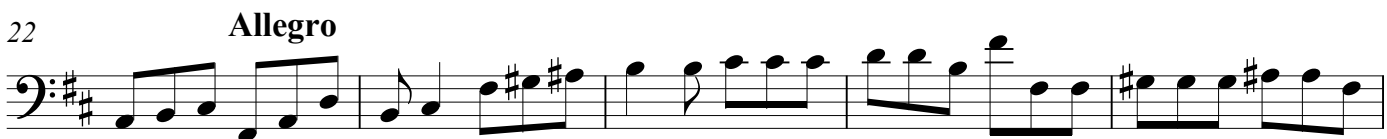


37



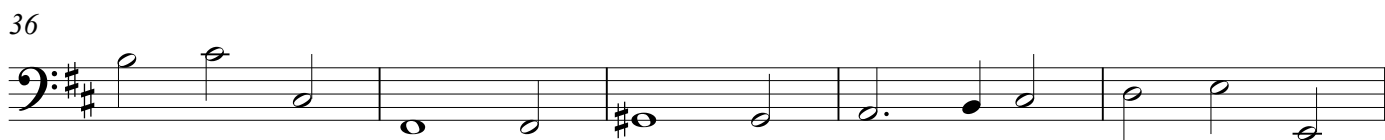
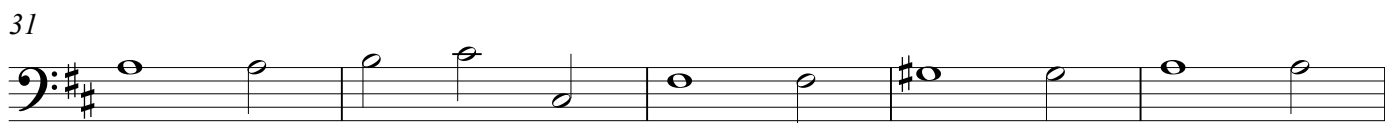
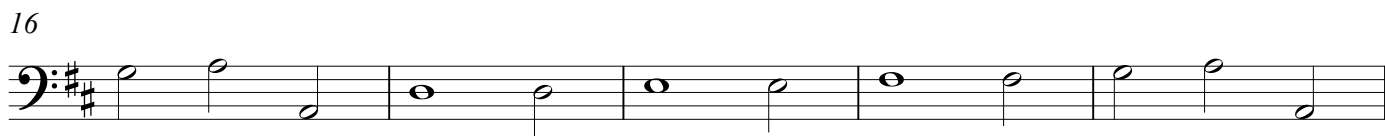
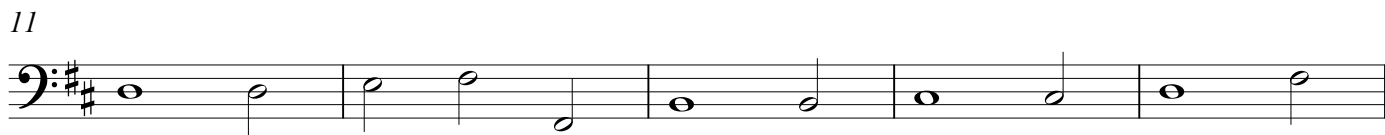
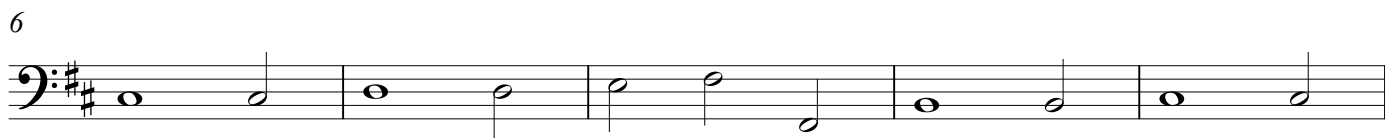
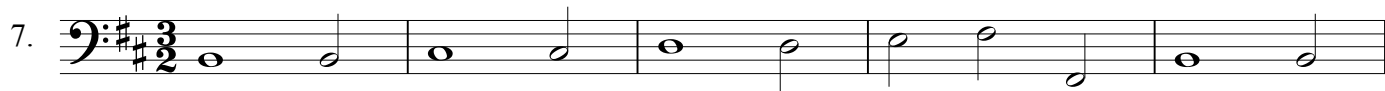
39



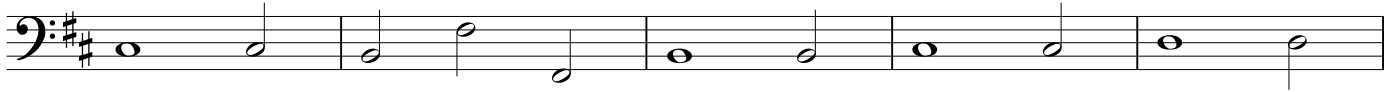


Violoncello

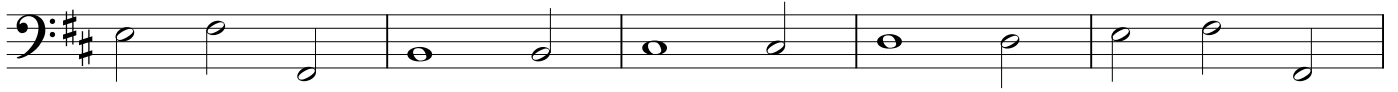
7



51



56



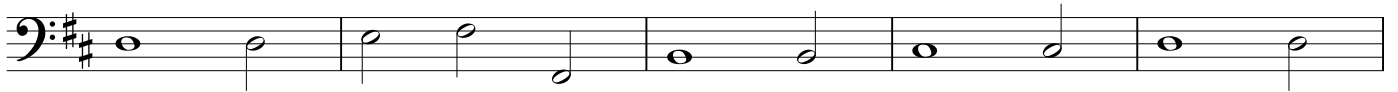
61



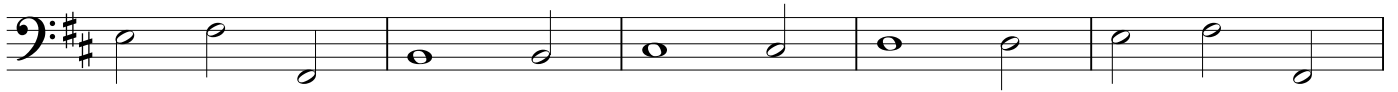
66



71



76



81



85

