

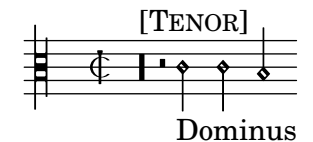
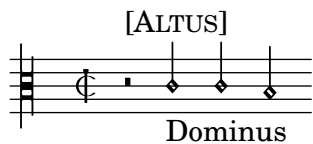
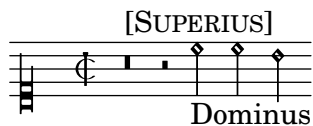
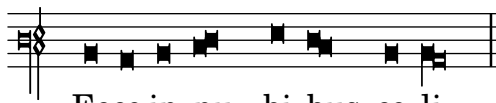
Ecce in nubibus caeli

from "Antiphonae Omnes iuxta ritum Romani Breviarii..." 1600 Bd.2

BSB Mus.pr.15-1/3#2

Gierolamo Lambardi

ed. Andreas Stenberg



Do - minus ve - ni et cum
Dominus ve - ni et cum po - tes - tate
Do - mi - nus ve - ni et cum po -
Do - mi - nus ve - ni et cum po -

6
po - tes - tate mag - na. Al - le - lu - ia, al - le - lu - ia, [al - le - lu - ia.]
mag - na. Al - le - lu - ia, al - le - lu - ia, [al - le - lu - ia.]
- ni - et cum po - tes - ta - te mag - na. Al - le - lu - ia, [al - le - lu - ia.]
tes - ta - te mag - na. Al - le - lu - ia.

Comments:

The first Antiphone for Psalms In Dominica Secunda Adventus

(c.f. Breviarium Romanum 1570.).

Transcribed from the print *Antiphonae Omnes Iuxta ritum Romani Breviarii*. Bd.2, 1600. The print in two books containing settings of the antiphones was printed at the printing press of the *Canonici Regulares Sancti Spiritus* prope Venetias of which Girolamo Lambardi was a prominent member (He was the general of the order at least in 1605.)

The antiphones in this collection are generally set with a Gregorian chant melody as *cantus prius factus* in the bassus part.

Below a version of the chant close to the one used by Lambardi as C.P.F.

Source:

UBG Ms 0029 : *Antiphonarium Benedictinum*. Pars hiemalis ad usum monasterii s. Lamberti

<https://unipub.uni-graz.at/obvugrscript/content/pageview/6705031>

<https://cantusdatabase.org/chant/243303>

Ec - ce in nu - bi - bus
ce - li do - mi - nus ve -
ni - et cum po - tes - ta -
te mag - na al - le - lu - ia

1. tone.
Ec - ce in nu - bi - bus cae -
li do - mi - nus ve - niet
cum po - te - sta - te ma -
- gna al - le - lu - ia