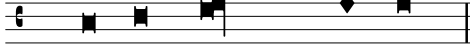


## VII. Tonus, [Psalmus 109 cum Antiphona]

BSB 2 Mus.pr.23#Beib.1

[Thomas Luis de Victoria]

ed. Andreas Stenberg

Antiph. 

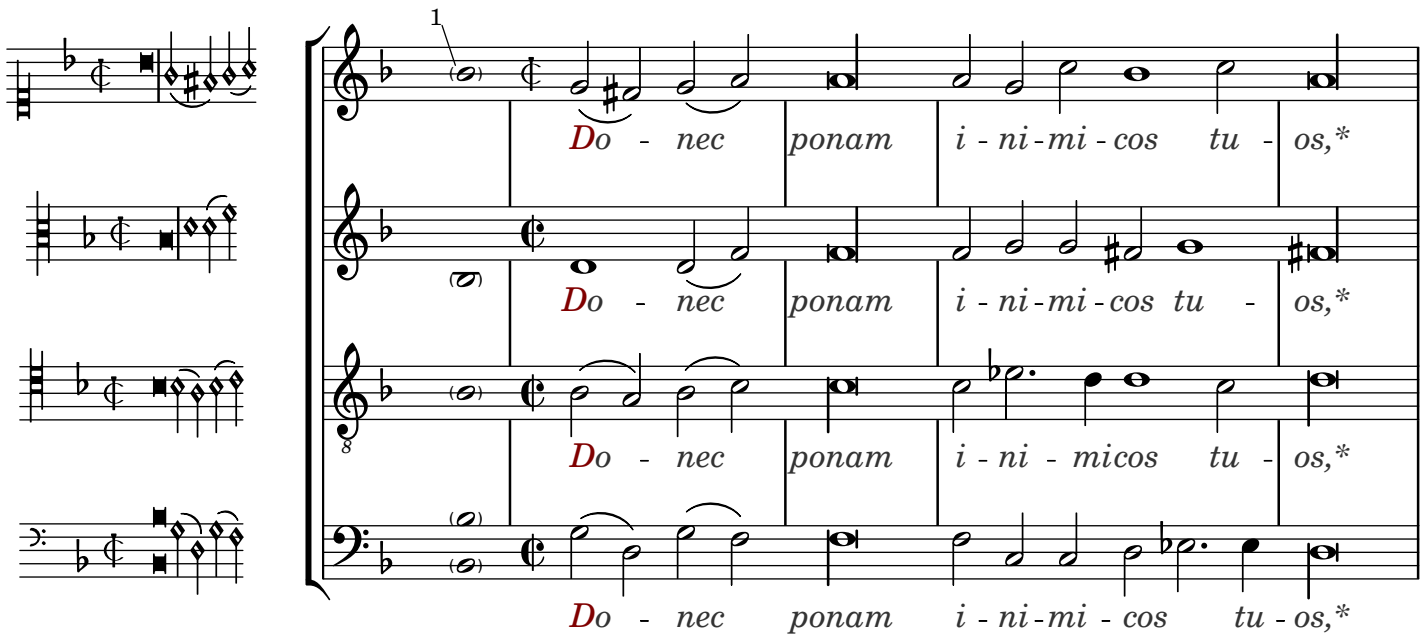
Di-xit Do - minus\*



*Di* - xit Do-minus Do - mino me-o:\* se - de à dextris



me - is.



1  
*Do* - nec ponam i - ni - mi - cos tu - os,\*  
*Do* - nec ponam i - ni - mi - cos tu - os,\*  
8  
*Do* - nec ponam i - ni - micos tu - os,\*  
*Do* - nec ponam i - ni - mi - cos tu - os,\*

<sup>1</sup>This note, a black brevis note in the original print, indicates the final note of the preceding section in chant.  
Copyright © 2021 by Andreas Stenberg

2

5

Scabellum pe - dum tu - o - rum.

Scabellum pe - dum tu - o - rum.

<sup>8</sup> Scabellum pe-dum tu - o - rum.

Scabellum pe-dum tu - o - rum.

**Dixit Dominus Domino meo:\***  
Sede a dextris meis,

**Donec ponam inimicos tuos\***  
scabellum pedum tuorum.

**Virgam virtutis tuae emittet Dominus ex Sion:\***  
dominare in medio inimicorum tuorum.

**Tecum principium in die virtutis tuae in splendoribus sanctorum:\***  
ex utero, ante luciferum, genui te.

**Juravit Dominus, et non poenitebit eum:\***  
Tu es sacerdos in aeternum secundum ordinem Melchisedech.

**Dominus a dextris tuis;\***  
confregit in die irae suae reges.

**Judicabit in nationibus, implebit ruinas;\***  
conquassabit capita in terra multorum.

**De torrente in via bibet;\***  
propterea exaltabit caput.

Gloria Patri, et  
 Gloria Patri, et  
 Gloria Patri, et  
 GLoria Patri &

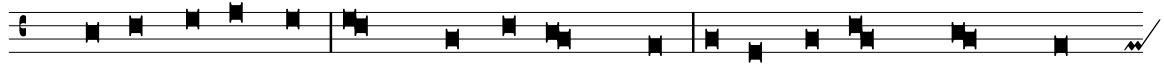
Gloria Patri, et Fi - li - o,  
 Gloria Patri, et Fi - li - o,  
 Gloria Patri, et Fi - li - o,  
 Gloria Patri, et Fi - li - o,

Gloria Patri, et Fi - li - o,

et Spiritui sanc - to.  
 et Spiritui sanc - to.  
 et Spiritui sanc-to.  
 et Spiritui sanc - to.

Sicut erat in principio, et nunc, et semper,\*  
 et in sæcula sæculorum. Amen.

## Antiphon.

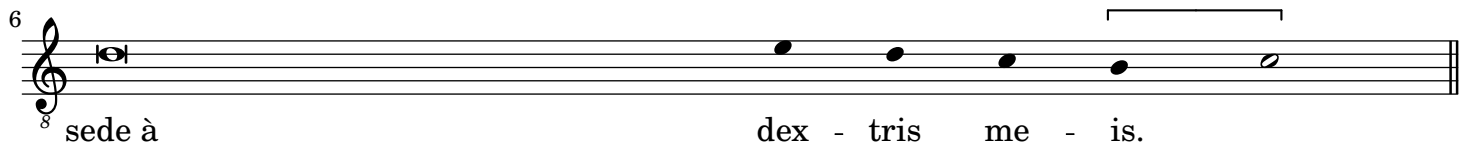
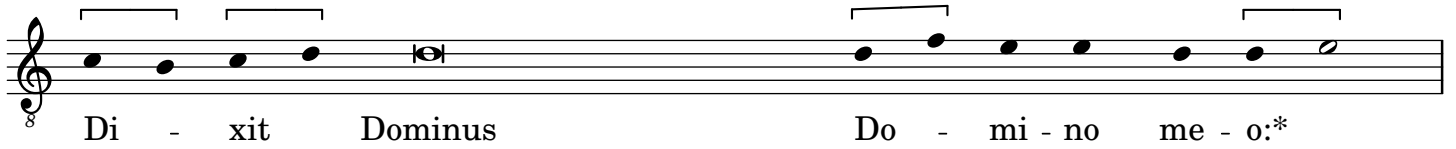
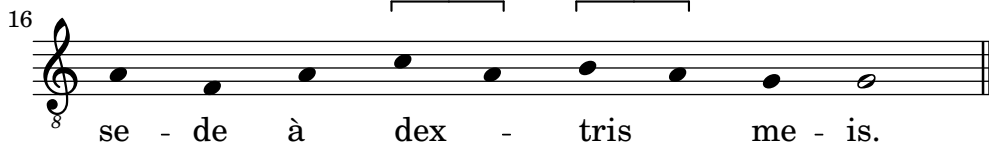
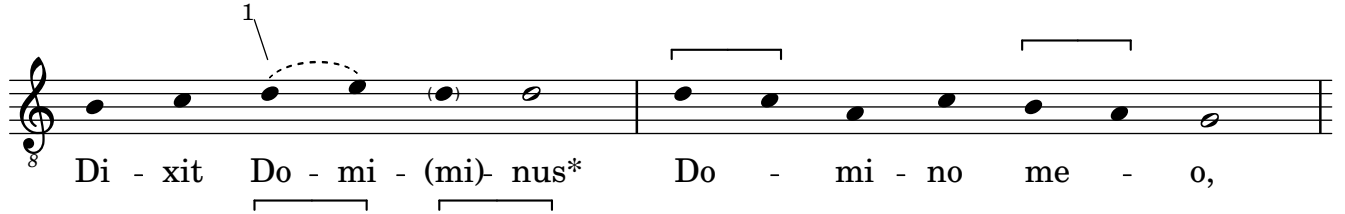


Di-xit Dominus\* Do - mi-no me - o, se-de à dex - tris me-



is.

## Transcripts of Antiphone and formula for chanting of psalms



<sup>1</sup>In the intonation this and the following note are a ligature and the "-mi" syllable is allocated to an extra d-note.