

# Te Deum

a 8 voix avec fl. et violons (H.145)

Marc-Antoine Charpentier  
(1672)

Basse de violon  
Choeur 2

## 1. Te Deum Laudamus

96 [D Ch.1] *voix et basse de viol du 2d ch.*

Te ae - ter - num Pa - trem

101

107

112 2

118

123

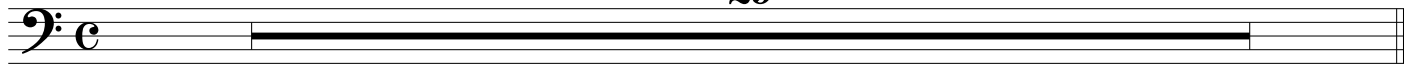
128

*Passez a la suite sans Interruption*

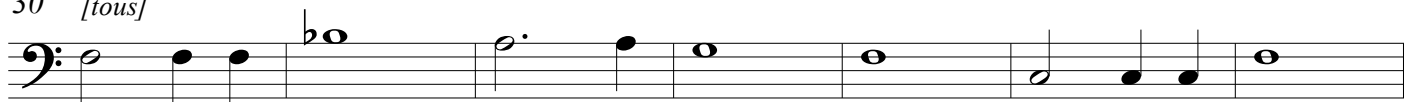
## 2. Tibi Cherubim

**guay**

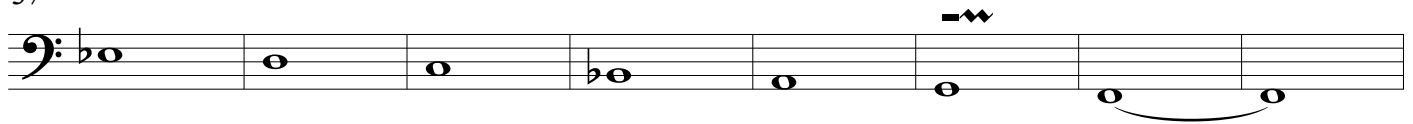
29



30 [tous]



37



45



52



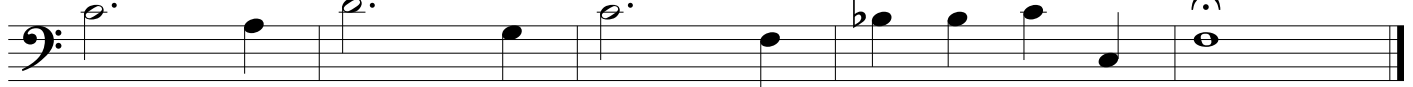
59



66



72



*Suivez apres une  
petite pause*

### 3. Te Gloriosus

*tous les vio[lo]ns et fl. des 2 chœurs  
mesmemesure*

35 [D Ch. 1/2]

lau - dat lau - dat ex - er - ci - tus. tous

39

42 tous

47

53

60

68 3 tous les vio[lo]ns  
et fl. des 2 chœurs

78

*Suivez a Venerandum Sans interruption*

## 4. Venerandum



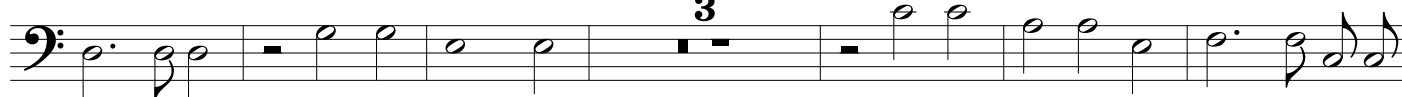
10



18



26



35

*tous les vio[lo]ns des 2 chœurs*

43

*Suivez après une petite pause*

## 5. Tu Rex Gloriae

59 85 33 45 [HC Ch.1]

re -

224 guay basse de vio[lo]ns et voix tous

de - mis - ti, re - de - mis

231

238

245

251

260

268

275

[illegible]


291

*Exercise 291*

*faites icy une petite pause*

*Lent*

40 *[V1 Ch.1/2]* *tous sans voix*  
*Basses de vio[lo]ns seuls*



40 *[V1 Ch.1/2]* *tous sans voix*  
*Basses de vio[lo]ns seuls*

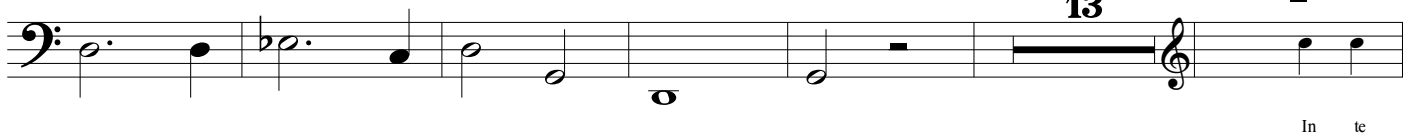
[illegible]

Musical notation for the bass line of 'The Rose Tree'. The notation is on a single staff with a bass clef. It consists of 12 measures. The notes are: G2 (half), A2 (quarter), B2 (quarter), C3 (half), D3 (half), E3 (half), F3 (half), G3 (half), A3 (quarter), B3 (quarter), C4 (half), and D4 (half). There are rests in measures 3, 4, 5, 6, 7, and 8.

Musical notation for the bass line of 'The Rose Tree'. The key signature has one flat (B-flat). The melody consists of the following notes: G2 (half note), A2 (half note), Bb2 (quarter note), Bb2 (quarter note), C3 (half note), Bb2 (quarter note), A2 (quarter note), G2 (half note).

74 *tous les viol[on]s et fl. des 2 chœurs*

82



In te

101



Do - mi - ne spe - ra - vi;

108



115



122



128



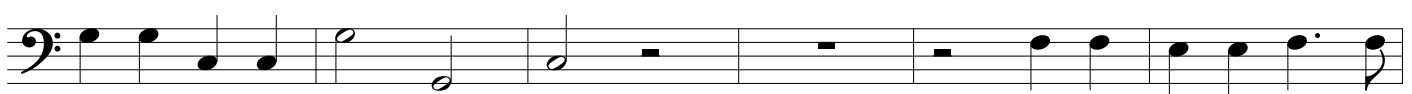
134



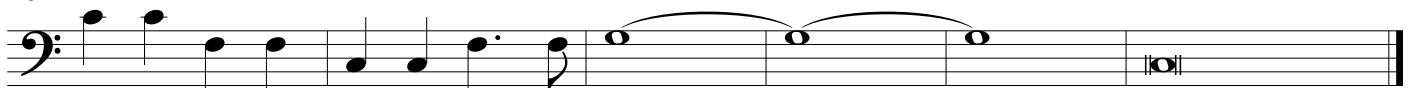
140



146



152



finis