

In Nativitate Domini, In primis Vesperis

Dum ortus fuerit

from "Antiphonae Vespertinae Dierum Festo[rum] Totis Anni..." 1597 Bd.1


BSB Mus.pr.15-1/3#1

Ad Magnificat.

Gierolamo Lambardi
ed. Andreas Stenberg



Dum or-tus:

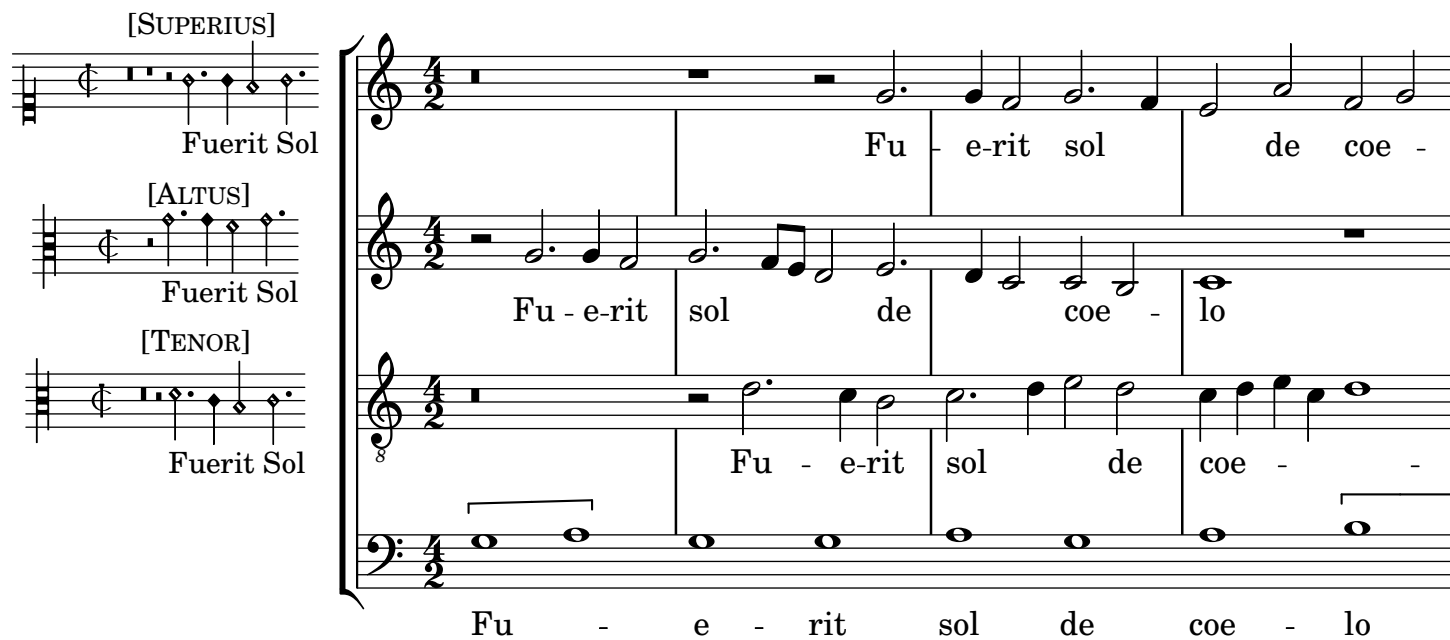


Dum or - tus:

[SUPERIUS]
Fuerit Sol

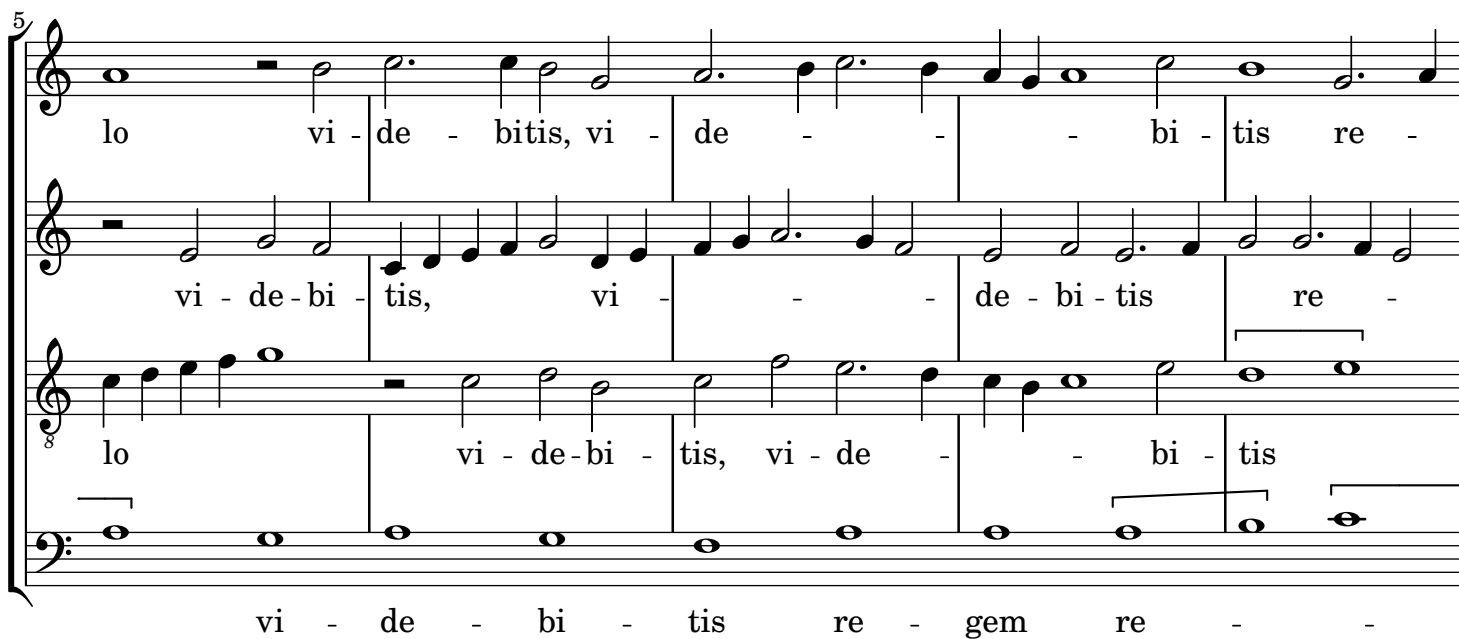
[ALTUS]
Fuerit Sol

[TENOR]
Fuerit Sol



Fu - e - rit sol de coe - lo

5



lo vi - de - bitis, vi - de - bi - tis re -

vi - de - bi - tis, vi - de - bi - tis re -

lo vi - de - bi - tis, vi - de - bi - tis

vi - de - bi - tis re - gem re -

2

10

gem re - gum pro - ce - den -

- gem re - gum pro - ce - den -

re - gem re - gum pro - ce - den - tem a

- gum pro - ce - den - tem

15

tem a pat - re, a pat - re tan - quam spon - sum de thalamo,

tem a pat - re, a pat - re tan - quam spon - sum de tha - la - mo

pat - re tan - quam spon -

a pat - re tan - quam spon - sum de tha -

22

de thalamo su - o.

su - o.

sum de thalamo su - o.

la - mo su - o.

Comments:

The Antiphone for Magnificat at First Vespers on the Feast of Nativitate Domini (c.f. Breviarium Romanum 1570.pag.).

Transcribed from the print "Antiphonarium Vespertinum Dierum Festorum Totius Anni..." bd.1. 1597.

The print in three books containing settings of the antiphones was printed at the printing pres of the Canonici Regolari Sancti Spiritus prope Venetias of Which Girolamo Lambardi was a prominent member (He was the general of the order at least in 1605.)

The antiphones in this collection are generally set with a gregorian chant melody as cantus prius factus in the bassus part.

Below a version of the chant close to the one used by Lambardi as CPF.

Source:

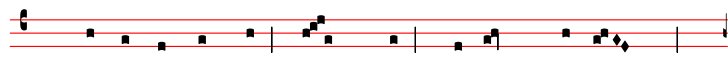
Sydney, University of Sydney, Fisher Library, Rare Books & Special Collections, Add. Ms. 413 (olim Add. Ms. Fol.1)

<https://digital.library.sydney.edu.au/nodes/view/6380#idx52920>

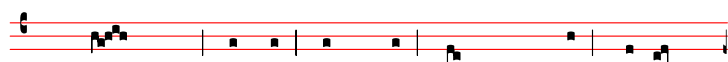
<https://cantusdatabase.org/chant/669489>



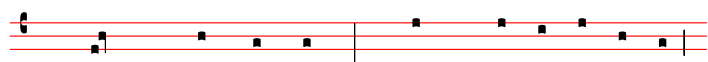
Dum or-tus fu-e-rit sol de ce-lo vi-



de-bitis regem re - gum pro-ce - den-tem



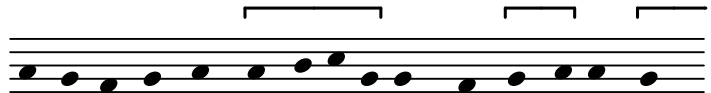
a patre tanquam spon-sum de tha-



la - mo su-o. **P.** Magni.



Dum or - tus fu - erit sol de ce-lo vi-



de-bi-tis regem re - gum pro-ce - den-tem



a pat-re tanquam spon - sum



de tha - la - mo su-o. **P.** Magni.