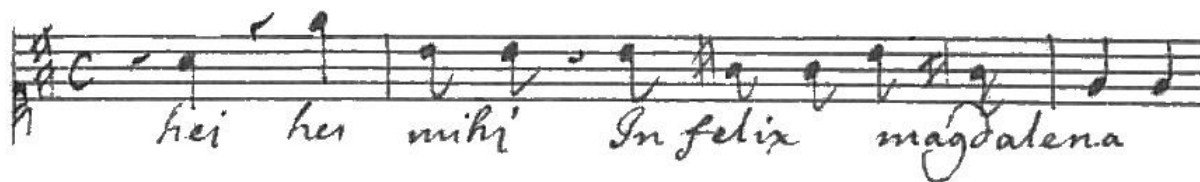


DIALOGUS INTER MAGDALENAM ET JESUM



After Joh. 20:12-17.

Marc Antoine Charpentier
(1643-1704)

Maria Magdalena

Jesus

Basso continuo

Hei, hei mi-hi, in-fe-lix Mag-da-le-na, hei, hei mi-hi, in-

b 9/4 b 6 7#

M

J

BC

fe-lix, in-fe-lix Mag-da-le-na. Tu-le-rum Do-mi-num me-um, quem a-ma-bam qui di-li-ge-bat

b6 8 4 # b 4 3

M

J

BC

me, in quo mi-ce-bam, qui pro me mo-vi dig-na-tus est, et ne-sci-o u-bi po-su-e-rum e-

4# b 5 6 3 6 4 6 6 4 3

M

J

BC

um, hei, hei, mi-hi in-fe-lix Mag-da-le-na, hei, hei, mi-hi, in-fe-lix, in-fe-lix Mag-da-

9/4 6 7# # b6 8

Source: Manuscript copy, c. 1680-1700.

Transposition reflects whole tone lower pitch in France.

Dialogus Inter Magdalenam et Jesum

18

M le - na! Do - mi-ne,

J Mu - li-er, quid plo-ras, quid su-spi-nas, quem que-ris?

BC

4 3 # 7 6# # 6 #

23

M si tu sus - tu-lis - ti Chri-stum me - um, di - ci-to mi - hi u - bi po-su-is - ti e - um, et e-go e - um

J

BC

6 b 6 7 6 # # 6 #

27

M tol-lam. Je-su mi!

J Ma - ri - a, no - li me tan - ge-re, no - li, non-dum e-nim as-cen-di ad Pa-trem

BC

4 3 # 6 4 2

34

M

J me - um. Va-de au - tem ad fra - tres me - os, et dic e - is: as - cen - do ad Pa - trem

BC

5 6 6

39

M

J me - um, as - cen - do ad Pa - trem me - um et Pa - trum ves - trum, De - um

BC

6 6# 5 6# 6 7 6# 3 5 4 6

Dialogus Inter Magdalenam et Jesum

47

M
 Li - ce - at mi - hi Do - mi - ne stig - ma - ta sa - cra tan - ge - re?

J
 8 me - um et De - um ves - trum.

BC
 6 9 8 4 3 4 3

57

M
 Os - cu - la - ri pla - gas tu - as? Am - plec -

J
 8 No - li me tan - ge - re, no - li. No - li me tan - ge - re, no - li.

BC
 4 3 5 6 4 3 4 3 5 6

67

M
 ti pe - des tu - os? Li - ce - at mi - hi, li - ce - at mi - hi Do - mi - ne,

J
 8 No - li, no - li, no - li me tan - ge - re, no - li.

BC
 6 6 # 4 2 # b 4 3 5# 6# 6 8 #

76

M
 stig - ma - ta sa - cra tan - ge - re? Li - ce - at mi - hi Do - mi - ne

J
 8 No - li me tan - ge - re, no - li, no - li, no - li, no - li, no - li me tan - ge - re, no - li,

BC
 4 3 # 6 6 4 3 # 6 7 6 4 #

85

M
 os - cu - la - ri pla - gas tu - as, i - ce - at mi - hi, Do - mi - ne, am - ple - vi pe - des tu - os?

J
 8 no - li, no - li, no - li, no - li me tan - ge - re, no - li, no - li, no - li, no - li.

BC
 6 6 4 3 6 6 4 3 6 5 6 4 3 #