

Magnificat

SWV 468

Heinrich Schütz
1585 - 1672

Bassus Continuus *Magnificat* *Tutti*



6



11 *Et exultavit*

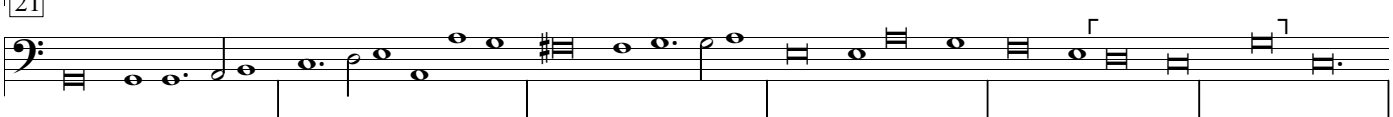
Bassus Continuus




15



21



27




33



40 *Quia respexit*

Bassus Continuus



46



51



59 Quia fecit

Bassus
Continuus

Musical notation for measures 59-62, Bassus Continuus. The notation is in treble clef with a common time signature (C). It features a melodic line with various intervals and rests, and a bass line with a steady eighth-note accompaniment.

63

Musical notation for measure 63, Bassus Continuus. The notation is in bass clef with a common time signature (C). It features a melodic line with various intervals and rests, and a bass line with a steady eighth-note accompaniment.

68

Musical notation for measures 64-67, Bassus Continuus. The notation is in bass clef with a common time signature (C). It features a melodic line with various intervals and rests, and a bass line with a steady eighth-note accompaniment.

74 Fecit potentiam

Bassus
Continuus

Musical notation for measures 74-77, Bassus Continuus. The notation is in bass clef with a common time signature (C). It features a melodic line with various intervals and rests, and a bass line with a steady eighth-note accompaniment.

78

Musical notation for measures 78-85, Bassus Continuus. The notation is in bass clef with a common time signature (C). It features a melodic line with various intervals and rests, and a bass line with a steady eighth-note accompaniment.

86 Deposuit potentes

Bassus
Continuus

Musical notation for measures 86-91, Bassus Continuus. The notation is in bass clef with a common time signature (C). It features a melodic line with various intervals and rests, and a bass line with a steady eighth-note accompaniment.

92

Musical notation for measures 92-95, Bassus Continuus. The notation is in bass clef with a common time signature (C). It features a melodic line with various intervals and rests, and a bass line with a steady eighth-note accompaniment.

96

Musical notation for measures 96-99, Bassus Continuus. The notation is in bass clef with a common time signature (C). It features a melodic line with various intervals and rests, and a bass line with a steady eighth-note accompaniment.

100 Esurientes

Bassus
Continuus

Musical notation for measures 100-103, Bassus Continuus. The notation is in bass clef with a common time signature (C). It features a melodic line with various intervals and rests, and a bass line with a steady eighth-note accompaniment.

104

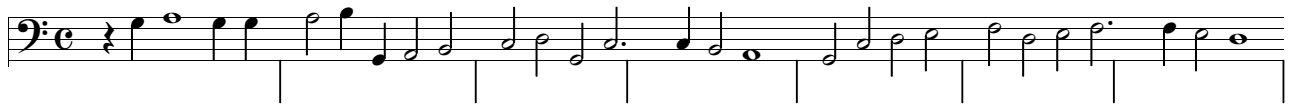
Musical notation for measures 104-106, Bassus Continuus. The notation is in bass clef with a common time signature (C). It features a melodic line with various intervals and rests, and a bass line with a steady eighth-note accompaniment.

107

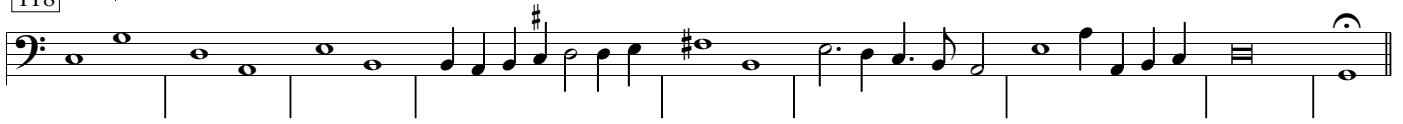
Musical notation for measures 107-110, Bassus Continuus. The notation is in bass clef with a common time signature (C). It features a melodic line with various intervals and rests, and a bass line with a steady eighth-note accompaniment.

111 Suscepit Israel

Bassus
Continuus

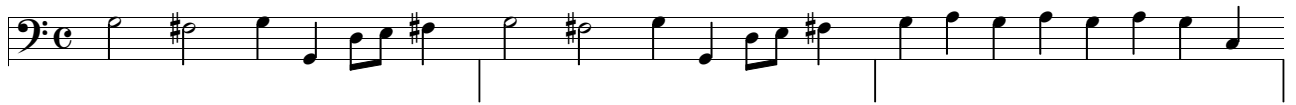


118

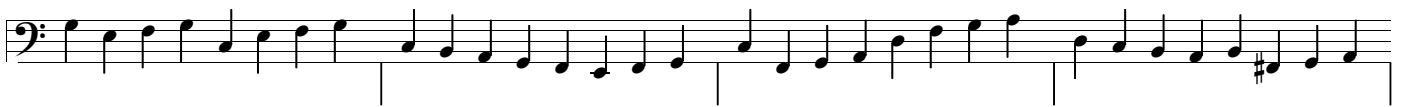


127 Sicut locutus est

Bassus
Continuus



130



134

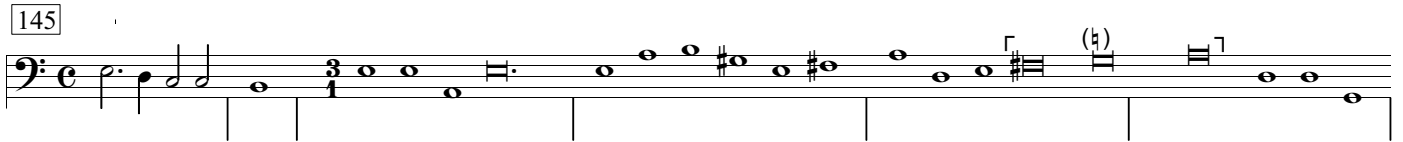


139 Gloria

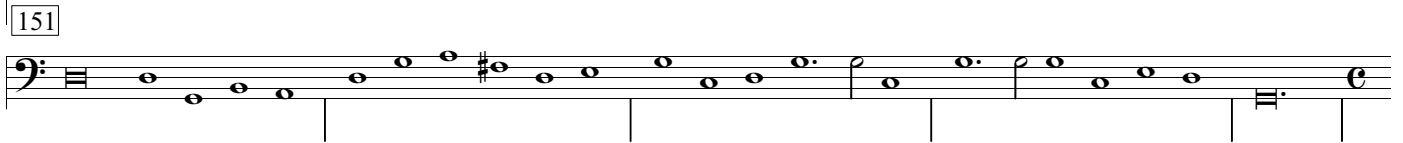
Bassus
Continuus



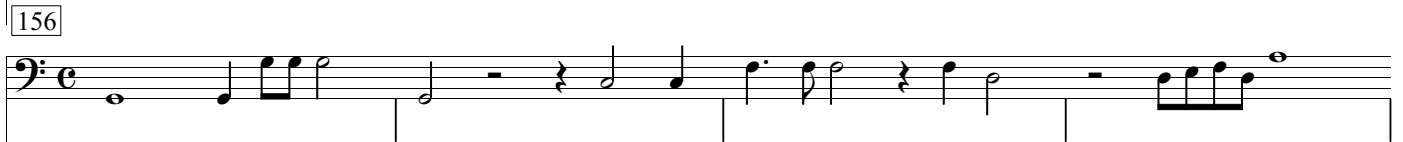
145



151



156



160



164

