

LITANIAE LAURERANAE

Vesperae longiores ac breviores una cum litanii Lauretanis

& Psalmi de Beata Maria Virgine

Heinrich Ignaz von Biber

1644 - 1704

Litaniae Lauretanæ.

Y-rie Eley-son Kyrie Eley-son
Christe au-dinos Christe ex-au-di-nos Spiritus sancte Deus
sancta Trinitas un⁹ Deus misere-re no-bis misere-re no-bis ora pro no-bis

Violin 1
Violin 2
Viola 1
Viola 2
Soprano
Alto
Tenor
Bass
Organ

Ky-ri-e e-lei-son, Ky-ri-e e-lei-son, Chris-te e-lei-son,
Ky-ri-e e-lei-son, Ky-ri-e e-lei-son,
Ky-ri-e e-lei-son, Ky-ri-e e-lei-son, Chris-te e-lei-son,
Ky-ri-e e-lei-son, Ky-ri-e e-lei-son, Chris-te e-lei-son,
Ky-ri-e e-lei-son, Ky-ri-e e-lei-son, Chris-te e-lei-son

Source: Edition Johann Baptist Mayr, Salzburg, 1693

(C) Wim Looyestijn - 2016. May be freely copied for non-commercial use.

Biber - Litaniae Lauretanae

8

Vln. 1

Vln. 2

Vla. 1

Vla. 2

S
lei - - son, Ky - ri - e, Ky - ri - e e - lei - - - son. Chris - te

A
Ky - ri - e, Ky - ri - e e - lei - - - son. Chris - te

T
8 lei - - son, Ky - ri - e, Ky - ri - e e - lei - - - son. Chris - te

B
8 lei - son, e - lei - - son, Ky - ri - e e - lei - - - son. Chris - te

Org.

4/2 b # 5/4 6/4 # 6

14

Vln. 1

Vln. 2

Vla. 1

Vla. 2

S
au - di-nos, Chris - te, Chris - te ex - au - di - nos. mi - se -

A
au - di-nos, Chris - te, Chris - te ex - au - di - nos.

T
8 au - di-nos, Chris - te, Chris - te ex - au - di - nos. Pa - ter de coe-lis De - us,

B
14 au - di-nos, Chris - te, Chris - te ex - au - di - nos.

Org.

6 7/3 4# # #

Biber - Litaniae Lauretanae

21

Vln. 1

Vln. 2

Vla. 1

Vla. 2

S

A

T

B

Org.

re - - - - re, mi - se - re - - - re, mi - se -

Spi - ri - tus san - cte De - us,

fi - li re - dem - ptor mun - di, De - us, Spi - ri - tus san - cte De - us,

Spi - ri - tus san - cte De - us,

25

Vln. 1

Vln. 2

Vla. 1

Vla. 2

S

A

T

B

Org.

re - - - - re, mi - se - re - - - - re, mi - se - re - re

san - cta Tri - ni - tas u - nus De - us, mi - se - re - - - - re

san - cta Tri - ni - tas u - nus De - us, mi - se - re - - - -

25 san - cta Tri - ni - tas u - nus De - us, mi - se -

Biber - Litaniae Lauretanae

30

Vln. 1

Vln. 2

Vla. 1

Vla. 2

S

A

T

B

Org.

no - - - - bis, mi - se - re - re no - - - - bis.

no - - - - bis, mi - se - re - - - re no - - - - bis.

- - re, mi - se - re - re, mi - se - re - re no - - - - bis.

re - - - - re, mi - se - re - - - re no - - - - bis.

4 # 6 6 7 4# #

35

Vln. 1

Vln. 2

Vla. 1

Vla. 2

S

A

T

B

Org.

San - cta Ma - ri - a, san - cta De - i - Ge - ni - trix,

o - ra pro no - bis,

o - ra pro no - bis, o - ra - pro no - bis, o - ra pro no - bis,

5 6 # 5 6 6 5 3 5 6 # 6 5

Biber - Litaniae Lauretanae

40

Vln. 1

Vln. 2

Vla. 1

Vla. 2

S

san-cta vir-go vir-gi-num, o-ra pro no-bis, o-ra-pro no-bis,

A

o-ra-pro no-bis, o-ra pro no-bis, pro no-bis, o-ra-pro no-bis,

T

o-ra-pro no-bis, o-ra pro no-bis, o-ra pro no-bis,

B

o-ra pro no-bis, o-ra-pro no-bis, o-ra-pro

Org.

6 5 6 5 3 6 5 # 6 5 6 5 6 5 6 5 # 5 6

45

Vln. 1

Vln. 2

Vla. 1

Vla. 2

S

o-ra pro no-bis.

A

o-ra, o-ra pro no-bis. Ma-ter Chris-ti, ma-ter di-vi-nae-gra-ti-ae, ma-ter pu-ris-si-ma, ma-ter cas-

T

o-ra-pro no-bis,

B

no-bis, pro no-bis. o-ra, o-ra pro no-bis, o-ra

Org.

7 6 7 6 5 # # 6 6 6

Biber - Litaniae Lauretanae

50

Vln. 1

Vln. 2

Vla. 1

Vla. 2

S

A

T

B

Org.

o -

tis-si-ma, ma-ter in-vi-o-la - ta, ma-ter in-te-me - ra - ta, o - - - - ra, o - ra pro - no - bis.

Ma-ter a -

50 - ra, o-ra pro no - bis, o - - - - ra, o-ra pro no - bis. o - - - - ra, o-ra pro no -

6 b # 6 6 5 4#

55

Vln. 1

Vln. 2

Vla. 1

Vla. 2

S

A

T

B

Org.

- - - - ra, o - - - - ra, o - - - - ra, o - - - - ra, o - ra,

ma - bi - lis, ma-ter ad - m - ra - bi - lis, ma-ter Cre - a - to - ris, ma-ter sal - va - to - ris, o -

55 bis.

6 6

Biber - Litaniae Lauretanae

59

Vln. 1

Vln. 2

Vla. 1

Vla. 2

S

A

T

B

Org.

o - - - ra pro no - bis.

- - - ra pro no - bis.

Vir - go pru-den-tis - si-ma, o - ra pro no - bis. Vir - go ve-ne-

6 6 6 6 5 4 3 6 6

63

Vln. 1

Vln. 2

Vla. 1

Vla. 2

S

A

T

B

Org.

Vir-go po-tens,

Vir-go po-tens,

Vir-go po-tens,

63 ran - - - da, vir - go prae-di-can - - da, o - ra pro no - bis. Vir-go po-tens, o-ra pro

6 4 5 4 3 # 3 3

Biber - Litaniae Lauretanae

67

Vln. 1

Vln. 2

Vla. 1

Vla. 2

S

A

T

B

Org.

o - ra pro no - - - bis. Vir-go cle-mens, o - ra pro

o - ra-pro no - bis, o - ra pro no - bis. Vir-go cle-mens, o - ra pro no - bis, o -

o - ra pro no - bis, o - ra-pro no-bis, pro no - bis. Vir-go cle-mens, o - ra pro no - bis, o-ra-pro no-

no - bis, o - ra, o - ra pro no - bis. Vir-go cle-mens, o-ra pro no - bis, o - ra, o -

6 4/2 6 7 6 5 6 7 6 4 # # 3 3 6 7 6 5 6 7 6

72

Vln. 1

Vln. 2

Vla. 1

Vla. 2

S

A

T

B

Org.

no - - - bis. Vir-go fi - de - lis, o - ra pro no - - -

ra pro no - bis. Vir-go fi - de - lis, o - ra pro no - bis, o - ra pro no -

bis, pro no - bis. Vir-go fi - de - lis, o - ra pro no - bis, o - ra pro no-bis, pro no -

ra pro no - bis. Vir-go fi - de - lis, o - ra pro no - - - bis, o - ra, o - ra pro no -

4 # # # 3 3 # 6/4 6 7 6 5 6 7 6 6 4 #

Biber - Litaniae Lauretanae

76

Vln. 1

Vln. 2

Vla. 1

Vla. 2

S

A

T

B

Org.

bis, o-ra pro no - bis.

bis, o-ra-pro no - bis, o - ra pro no - bis. Spe-cu-lum jus-ti - ti-ae, o-ra pro-no - bis.

bis, o-ra pro no - bis. Se-des sa-pi - en-ti-ae, o-ra pro

bis, o-ra pro no - bis, pro no - bis.

7 6 6 6/6 4# # b 6 # b 6

81

Vln. 1

Vln. 2

Vla. 1

Vla. 2

S

A

T

B

Org.

Cau-sa nos-trae lae-ti - ti-ae, o-ra pro no - - - - - bis, o-ra, o-ra pro no - bis.

no - bis. Vas spi-ri-tu - a-le, o-ra, o - ra pro

6 7 6 7 6 6 6 #6 5 5 6

Biber - Litaniae Lauretanae

86

Vln. 1

Vln. 2

Vla. 1

Vla. 2

S

A

T
no - bis, vas ho - no - ra - bi - le, o - ra pro no - bis, vas in - sig - ne de - vo - ti - o - nis, o - ra pro no - - -

B

Org.

b 6 6 6 5 b # 6 7 6

91

Vln. 1

Vln. 2

Vla. 1

Vla. 2

S

A

T
- - - bis, o - ra, o - ra pro no - bis.

B

Org.

7 6 6 6 6 4 5 b # 6 # 6 6 6 6 5

Biber - Litaniae Lauretanae

96

Vln. 1

Vln. 2

Vla. 1

Vla. 2

S

A

T

B

Org.

Ro - sa mys - tica, tur - ris da - vi - dica, tur - ris e - bur - ne - a, o - ra pro no - bis.

Ro - sa mys - tica, tur - ris da - vi - dica, tur - ris e - bur - ne - a, o - ra pro no - bis.

o - ra pro no - - - bis, pro no - - - bis, o - ra pro no - - - bis.

Do - mus au - rea, o - ra pro

4 3 6 6 6 6 5 6 4 5 6 5 3 4 4 3

101

Vln. 1

Vln. 2

Vla. 1

Vla. 2

S

A

T

B

Org.

Stel -

Fae - de - ris ar - ca, o - ra pro no - bis, Ja - nu - a coe - li, o - ra pro no - bis, o - ra pro no -

Fae - de - ris ar - ca, o - ra pro no - bis, Ja - nu - a coe - li, o - ra pro no - bis, o - ra pro no -

no - bis, o - ra pro no - - - bis, pro no - - - bis, o - ra pro no - - - bis, o - ra pro no -

4 4 # 6 # 6 6 5 6 5 6 5 3 4 4 # 6 4

Biber - Litaniae Lauretanae

Adagio

106

Vln. 1

Vln. 2

Vla. 1

Vla. 2

S

A

T

B

Org.

la ma - tu - ti - na, o - ra, o - - - - ra pro no - bis. Sa - lus in - fir - mo - rum,

bis. Sa - lus in - fir - mo - rum,

bis. Sa - lus in - fir - mo - rum,

bis. Sa - lus in - fir - mo - rum,

b # 5 6 # 6 4 5 # # 5 3 4b 2

111

Vln. 1

Vln. 2

Vla. 1

Vla. 2

S

A

T

B

Org.

o - ra pro no - bis. Re - fu - gi - um pec - ca - to - rum, o - ra pro no - bis. Conso - la - trix af - flic - to - rum,

o - ra pro no - bis. Re - fu - gi - um pec - ca - to - rum, o - ra pro no - bis. Conso - la - trix af - flic - to - rum,

o - ra pro no - bis. Re - fu - gi - um pec - ca - to - rum, o - ra pro no - bis. Conso - la - trix af - flic - to - rum,

o - ra pro no - bis. Re - fu - gi - um pec - ca - to - rum, o - ra pro no - bis. Conso - la - trix af - flic - to - rum,

111 o - ra pro no - bis. Re - fu - gi - um pec - ca - to - rum, o - ra pro no - bis. Conso - la - trix af - flic - to - rum,

4 2 5 4b 4 2 6 4 2

Biber - Litaniae Lauretanae

117

Vln. 1

Vln. 2

Vla. 1

Vla. 2

S

A

T

B

Org.

o - ra, o - ra pro no - bis. Au - xi - liumChris-ti - a - no - rum, o - ra, o - ra, o - ra, o - ra pro - no - bis.

o - ra, o - ra pro no - bis. Au - xi - liumChris-ti - a - no - rum, o - ra, o - ra pro - no - bis.

o - ra, o - ra pro no - bis. Au - xi - liumChris-ti - a - no - rum, o - ra, o - ra pro - no - bis.

o - ra, o - ra pro no - bis. Au - xi - liumChris-ti - a - no - rum, o - ra, o - - - ra pro - no - bis.

6 #6 5/4 3 # 6 5 6 5 5 b6 5/3 2# 6 5/4 # #

123

Vln. 1

Vln. 2

Vla. 1

Vla. 2

S

A

T

B

Org.

Re-gi-na an-ge - lo - rum, re - gi-na pa - tri-ar - cha - rum,

o - - - - - ra pro no - bis.

o - - - - -

b 6 # 6 5 # 6 #

Biber - Litaniae Lauretanae

130

Vln. 1

Vln. 2

Vla. 1

Vla. 2

S

A

T

B

Org.

Re - gi - na pro - phe - ta - rum,
o - - - - - ra pro no - bis.

130 - - ra pro no - bis. Re - gi - na a - pos - to - lo - rum,

6 6 3 6 6 5 # # 6 5 # b

137

Vln. 1

Vln. 2

Vla. 1

Vla. 2

S

A

T

B

Org.

ra pro no - bis, o - ra pro no -

o - - - - - ra pro no -

Re - gi - na mar - ty - rum, o - ra pro no -

o - - - - - ra pro no -

6 6 # # # 6 # 3 6 5

Biber - Litaniae Lauretanae

143

Vln. 1

Vln. 2

Vla. 1

Vla. 2

S

A

T

B

Org.

bis, o - - - - - ra pro no - bis, o - - -

bis, Re - gi-na con-fes-so - rum, o-ra pro no - bis. Re - gi - na vir-gi-num,

bis, o - - - - - ra pro no - bis. o -

bis, o-ra pro no - bis.

6 # b # 3 6 5 # # 6

151

Vln. 1

Vln. 2

Vla. 1

Vla. 2

S

A

T

B

Org.

- - - - - ra pro no - bis. Re - gi - na san-cto-rum om - ni-um, o - - - -

o - ra pro no - bis. Re - gi - na san-cto-rum om - ni-um,

- - - - - ra pro no - bis. Re - gi - na san-cto-rum om - ni-um, o -

o - ra pro no - bis. Re - gi - na san-cto-rum om - ni-um,

3 6 4 5 # # b # 1 1

Biber - Litaniae Lauretanae

157

Vln. 1

Vln. 2

Vla. 1

Vla. 2

S

A

T

B

Org.

ra pro no - bis, o - ra pro no - bis.

o - ra pro no - bis, o - - - - - ra pro no - bis.

ra pro no - bis, o - ra pro no - bis.

o - ra pro no - bis, o - - - - - ra pro no - bis.

o - ra pro no - bis, o - - - - - ra pro no - bis.

3 6 5 # # 1 1 # 3 6 5 #

163 Adagio

Vln. 1

Vln. 2

Vla. 1

Vla. 2

S

A

T

B

Org.

Ag - - - - nus De - i, par - ce no - bis

qui tol - lis pec-ca - ta mun - di, pec - ca-ta mun-di, par - ce no - bis

Ag - nus De - i, par - ce no - bis

Ag - - - - nus De - i, qui tol - lis pec-ca - ta mun - di, par - ce no - bis

6 6 6 6 6 # 6 7 # 4 # 6 6b 5 6 #

Biber - Litaniae Lauretanae

169

Vln. 1

Vln. 2

Vla. 1

Vla. 2

S

A

T

B

Org.

Do - mi-ne,

Do - mi-ne, ag - - - nus De - i, qui tol - lis pec-ca - ta

Do - mi-ne, qui

169 Do - mi-ne, qui tol - lis pec-ca - ta mun - di, qui

4 3 6 6 6 6 6 # 1 1 1 6 7 # 6

174

Vln. 1

Vln. 2

Vla. 1

Vla. 2

S

A

T

B

Org.

qui tol - lis pec-ca - ta mun - di, ex - au - di, ex-au - di nos Do - mi-ne.

mun - di, pec - ca - ta, pec-ca - ta mun - - - di, ex - au - di, ex-au - di nos Do - mi-ne.

tol - lis pec-ca - ta mun - - - di, mun - di, ex - au - di, ex-au - di nos Do - mi-ne.

174 tol - lis pec - ca - ta, pec-ca - ta mun - di, ex - au - di, ex-au - di nos Do - mi-ne.

7 # 6 6 # 6 5 # # 6 7 6 4# # 6 6 4 3

Biber - Litaniae Lauretanae

179

Vln. 1

Vln. 2

Vla. 1

Vla. 2

S

Ag - - - - nus De - i, qui tol - lis pec-ca - ta

A

Ag - - - - nus De - i, qui tol - lis pec-ca - ta mun - di, qui tol - lis pec-ca-ta mun -

T

Ag - nus De - i, qui tol - lis pec-ca - ta mun - - - di,

B

Ag - - - - nus De - i, qui tol - lis pec-ca - ta mun - di, qui tol - lis pec - ca - ta, pec-ca - ta

Org.

1 1 6 6 6 6 6 # 1 1 1 1 1 6 7 #6 6 7 #6 6 #6 # 6 7 6

185

Vln. 1

Vln. 2

Vla. 1

Vla. 2

S

mun - di, mi - se-re-re, mi-se - re - re no - bis, mi-se-re-re no -

A

- - - di,

T

mun-di, mi - se-re-re, mi-se - re - re, mi - se-re-re no - bis, mi-se-re-re no -

B

185 mun - di, mi - se-re-re, mi-se - re - re, mi-se - re - re no - bis, mi - se - re - re no -

Org.

4 # # 1 3 #3 6 6 3 2 9 8 4# 6 6 #

Biber - Litaniae Lauretanae

191

Vln. 1

Vln. 2

Vla. 1

Vla. 2

S

A

T

B

Org.

bis, qui tol - lis pec-ca - ta mun - di, qui tol-lis pec-ca-ta mun - di, qui tol - lis pec-ca ta mun - di,

mi - se-re-re, mi-se - re-re no - bis, mi - se-re-re, mi-se - re-re no - bis,

bis, qui tol - lis pec-ca-ta mun - di, qui tol - lis pec-ca - ta mun - di, mi - se-re-re, mi-se-

191 bis, mi - se-re-re, mi-se - re - re, mi - se-re-re, mi-se - re - re, mi - se-re-re no - bis,

7 6 7 6 6 4 # 7 6 6 7 6 6 5 # # 6 b5

198

Vln. 1

Vln. 2

Vla. 1

Vla. 2

S

A

T

B

Org.

mi - se-re-re, mi-se - re-re no - bis, mi - se-re-re, mi-se-re - re no - - bis.

mi - se-re-re, mi-se-re-re, mi-se - re - re no - bis, mi - se - re - re no - - bis.

re-re no - bis, mi-se-re-re, mi-se - re-re no - bis, mi - se-re-re, mi-se-re - re no - - bis.

198 mi - se-re-re, mi-se-re - re no - - - bis, mi - se - re - re no - - bis.

7 6 6 7 6 4 # # 6 b5 4# #

Violin-1

LITANIAE LAURERANAE

Vesperæ longiores ac breviores una cum litaniiis Lauretanis

& Psalmi de Beata Maria Virgine

Heinrich Ignaz von Biber

1644 - 1704

6

11

16

20

24

31

36

41

46

13

4

Biber - Litaniae Lauretanae

61

63

66

71

76

81

86

91

96

106

119

134

Adagio

3

4

8

11

5

Detailed description: This image shows a page of musical notation for the 'Litaniae Lauretanae' by Heinrich Biber. The score is written in treble clef with a key signature of one sharp (F#). It consists of ten staves of music, each beginning with a measure number. The notation includes various rhythmic values, accidentals, and dynamic markings. Notably, there are several fermatas with numerical counts (3, 4, 8, 11, 5) placed above the notes. The tempo marking 'Adagio' is positioned above the staff starting at measure 106. The page number '- 2 -' is centered at the bottom.

Biber - Litaniae Lauretanae

142

149

156

160 Adagio₄

168

175

180

189

196

201

Detailed description: This image shows a page of musical notation for the piece 'Litaniae Lauretanae' by Heinrich Biber. The score is written in treble clef with a key signature of one sharp (F#). It consists of ten staves of music, each starting with a measure number. The notation includes various rhythmic values, rests, and articulation marks. Notable features include a '3' marking above a triplet of eighth notes in measures 142, 149, 168, 180, and 189. A tempo change to 'Adagio' is indicated in measure 160, with a '4' below the word. The piece concludes with a double bar line at the end of measure 201.

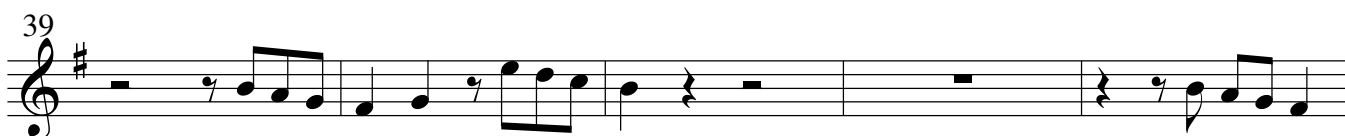
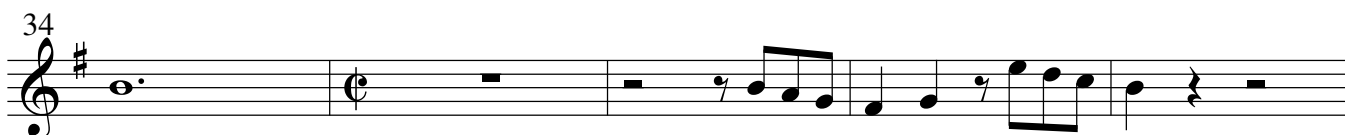
Violin-2

LITANIAE LAURERANAE

Vesperæ longiores ac breviores una cum litaniiis Lauretanis

& Psalmi de Beata Maria Virgine

Heinrich Ignaz von Biber
1644 - 1704



Source: Edition Johann Baptist Mayr, Salzburg, 1693

Biber - Litaniae Lauretanae

61

63

66

71

76

81

86

91

96

106

119

134

3

4

8

11

5

Adagio

Detailed description: This image shows a page of musical notation for the piece 'Litaniae Lauretanae' by Heinrich Biber. The score is written in treble clef with a key signature of one sharp (F#). It consists of ten staves of music, each beginning with a measure number. The notation includes various rhythmic values, accidentals, and rests. At measure 96, there is a triplet of eighth notes marked with a '3' above it. At measure 106, the tempo marking 'Adagio' is present above the staff, followed by an eighth rest marked with an '8'. At measure 119, there is a triplet of eighth notes marked with an '11' above it. At measure 134, there is a quarter rest marked with a '5' above it. The piece concludes with a final measure at measure 134.

Biber - Litaniae Lauretanae

142

146

150

154

160

168

174

179

185

191

196

201

Viola-1

LITANIAE LAURERANAE

Vesperae longiores ac breviores una cum litanis Lauretanis

& Psalmi de Beata Maria Virgine

Heinrich Ignaz von Biber

1644 - 1704



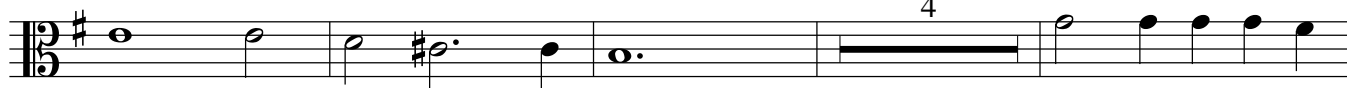
6



11



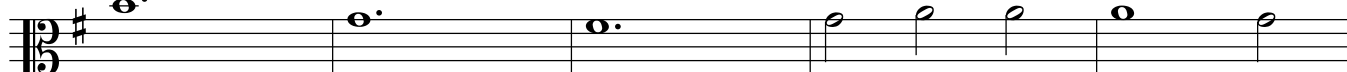
16



24



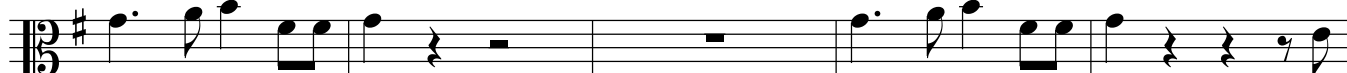
28



33



38



43



65



Biber - Litaniae Lauretanae

70

70 Musical staff with treble clef and key signature of one sharp (F#). It contains several measures of music, including rests, eighth notes, and sixteenth notes.

75

75 Musical staff with treble clef and key signature of one sharp (F#). It contains several measures of music, including eighth notes and sixteenth notes.

80

80 Musical staff with treble clef and key signature of one sharp (F#). It contains several measures of music, including eighth notes and sixteenth notes.

85

85 Musical staff with treble clef and key signature of one sharp (F#). It contains several measures of music, including eighth notes and sixteenth notes.

91

91 Musical staff with treble clef and key signature of one sharp (F#). It contains several measures of music, including eighth notes and sixteenth notes.

96

96 Musical staff with treble clef and key signature of one sharp (F#). It contains rests, a triplet of eighth notes (labeled '3'), and a group of four sixteenth notes (labeled '4').

106

Adagio

106 Musical staff with treble clef and key signature of one sharp (F#). It contains rests, a group of eight sixteenth notes (labeled '8'), and a final note with a sharp sign.

119

119 Musical staff with treble clef and key signature of one sharp (F#). It contains a triplet of eighth notes (labeled '3'), rests, and a group of eleven sixteenth notes (labeled '11').

134

134 Musical staff with treble clef and key signature of one sharp (F#). It contains rests, eighth notes, and a group of three sixteenth notes (labeled '3').

140

140 Musical staff with treble clef and key signature of one sharp (F#). It contains eighth notes, a sharp sign, and a final whole note rest.

144

144 Musical staff with treble clef and key signature of one sharp (F#). It contains a triplet of eighth notes (labeled '3'), eighth notes, a sharp sign, and a final triplet of eighth notes (labeled '3').

Viola-2

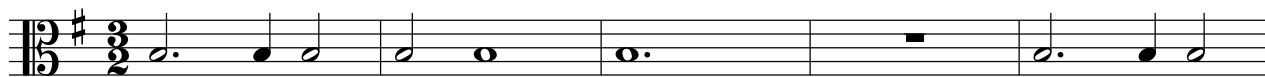
LITANIAE LAURERANAE

Vesperæ longiores ac breviores una cum litaniiis Lauretanis

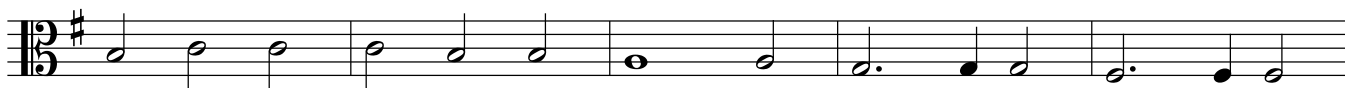
& Psalmi de Beata Maria Virgine

Heinrich Ignaz von Biber

1644 - 1704



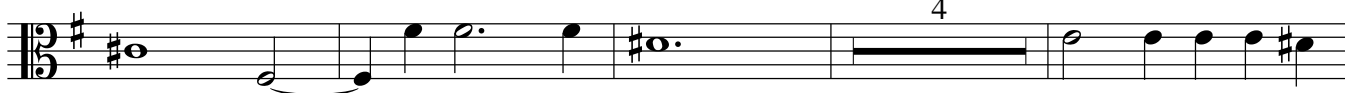
6



11



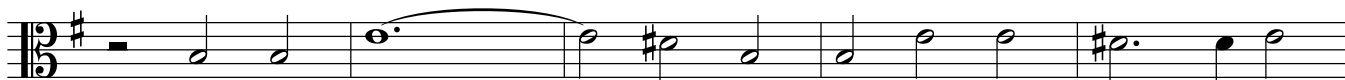
16



24



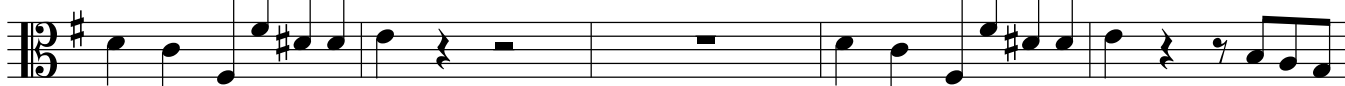
28



33



38



43



65



Biber - Litaniae Lauretanae

70



75



80



85



90



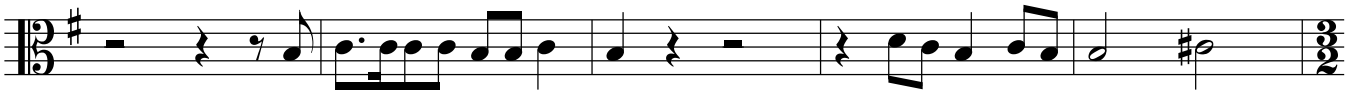
95



102



118



123



137



146



Biber - Litaniae Lauretanae

150



154



158



163

Adagio 4



173



178



183



188



193



198



202



Cello

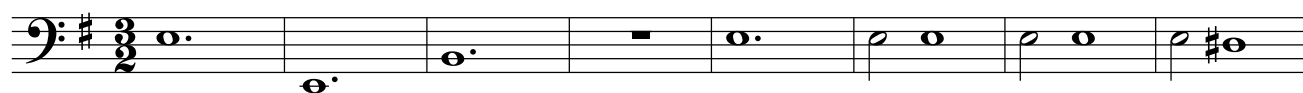
LITANIAE LAURERANAE

Vesperæ longiores ac breviores una cum litaniiis Lauretanis

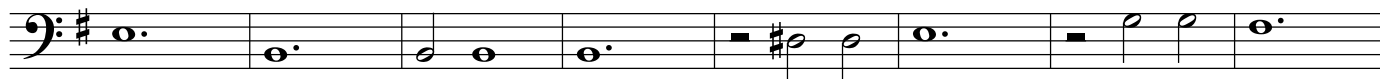
& Psalmi de Beata Maria Virgine

Heinrich Ignaz von Biber

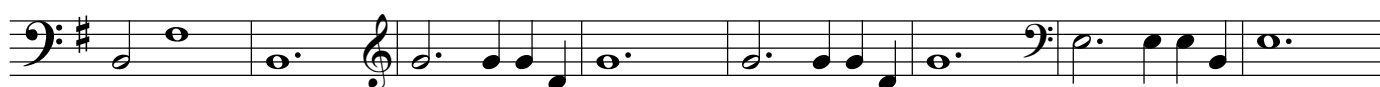
1644 - 1704



9



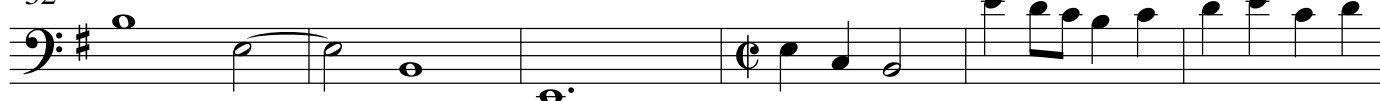
17



25



32



38



44



50



57



66



Biber - Litaniae Lauretanae

73



79



86



93



98



104

Adagio



111



118



123



130



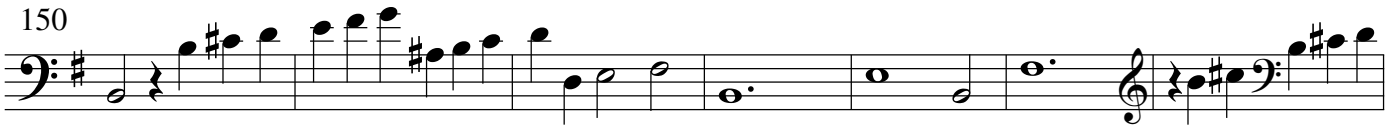
137



144



150



157



163

Adagio



169



175



181



188



194



199



B.C.

LITANIAE LAURERANAE

Vesperæ longiores ac breviores una cum litaniiis Lauretanis

& Psalmi de Beata Maria Virgine

Heinrich Ignaz von Biber

1644 - 1704

9

17

25

32

38

44

50

57

66

The image displays a musical score for a bass instrument, likely a lute or viola da gamba, in the key of D major (one sharp) and 3/4 time. The score is divided into measures, with measure numbers 9, 17, 25, 32, 38, 44, 50, 57, and 66 indicated. The notation includes a bass clef, a key signature of one sharp (F#), and a 3/4 time signature. The music consists of a single melodic line with various note values (half notes, quarter notes, eighth notes, and sixteenth notes). Below the staff, there is a system of figured bass notation, which includes numbers (1-7) and accidentals (sharps and flats) to indicate fingerings and chromatic alterations. Some measures contain rests, indicated by a horizontal line with a vertical tick. The score is presented in a clean, black-and-white format.

Biber - Litaniae Lauretanae

73

73

♯ 3 3 ♯ 6/4 6 7 6 5 6 7 6 6 4 ♯ 7 6 6 7 6 4 ♯ ♯ ♭

79

79

6 ♯ ♭ 6 ♯ 6 7 6 7 6 6 6 6 6 4 5 ♯ 5 6

86

86

♯ ♭ 6 6 6 5 6 ♯ 6 7 6 7 6 6 6 6 4 5

93

93

♭ ♯ 6 ♯ 6 6 6 5 4 3 6 6 6 6 5

98

98

6 5 6 6 5 6 4 4 3 ♯ 4 4 ♯ 6 ♯ 6 6 6 5 6 5 4 5

104

Adagio

104

6 5 6 5 ♯ 6 ♯ 4 ♯ ♭ ♯ 5 6 ♯ 6 5 ♯ 5 3 4 ♭ 2

111

111

4/2 5/3 4 ♭ 2 4/2 6/4 6 ♯ 6

118

118

5/4 3 ♯ 6 5 6 5 5 ♭ 6 5 4 ♯ 6 5 4 ♯ ♯

123

123

♭ 6 ♯ 6 5 ♯ 6 ♯

130

130

6 6 3 6 6 5 ♯ ♯ 6 5 ♯ ♭

Biber - Litaniae Lauretanae

137

6 6 5 # # 6 # 3 6 5 # # 6

144

b # 3 6 5 # # 6

150

3 6# 5 # # b # 1 1

157

3 6 5 # # 1 1 # 3 6 5 #

163

Adagio

6 6 6 6 6 # 6 7 # 4 # 6 6b 5 6 #

169

4 3 6 6 6 6 6 # 1 1 1 6 7 # 7 # 6

175

#6 5 # # 6 7 6 4# # # 6 5 4 3 1 1 6 6 6 6 6 # 1

181

1 1 1 1 6 7 #6 6 7 #6 6 #6 # # 6 7 6 4 # # 1 3 #3 6

188

6 3 2 9 8 4# # 6 6 # 7 6 7 # 6 6 4 #

194

7 # 6 6 7 # 6 6 5 # # 6 b5 7 #

199

6 7 # 6 4 # # 6 b5 5 4# #

LITANIAE LAURERANAE

Vesperæ longiores ac breviores una cum litanis Lauretanis

& Psalmi de Beata Maria Virgine

Heinrich Ignaz von Biber

1644 - 1704

Organ

b3
5 # 6 4
6 4 b
4 2

Org.

b

5 # 4 #
6
6
7 #3

Org.

4#

#

Org.

4 #
4 #
6 6

Org.

4#

5 6 #
5 6
6 5 3

Source: Edition Johann Baptist Mayr, Salzburg, 1693

(C) Wim Looyestijn - 2016. May be freely copied for non-commercial use.

Biber - Litaniae Lauretanae

38

Org.

5 6 # 6 5 6 5 6 5 3 6 5 # 6 5 6 5

Detailed description: This system contains six measures of music. The treble clef staff has whole rests. The bass clef staff has a melodic line with eighth and quarter notes. Fingering numbers are placed below the notes.

44

Org.

6 5 # 5 6 7 6 7 6 5 # # 6 6 6 6 6

Detailed description: This system contains six measures of music. The treble clef staff has whole rests. The bass clef staff has a melodic line with eighth and quarter notes. Fingering numbers are placed below the notes.

50

Org.

6 b # 6 6 5 4# 6 6

Detailed description: This system contains six measures of music. The treble clef staff has whole rests. The bass clef staff has a melodic line with eighth and quarter notes. Fingering numbers are placed below the notes.

57

Org.

6 5 6 6 5 4 3 6 6 6 5 4 3

Detailed description: This system contains six measures of music. The treble clef staff has whole rests. The bass clef staff has a melodic line with eighth and quarter notes. Fingering numbers are placed below the notes.

66

Org.

3 3 # 6/4 6 7 6 5 6 7 6 4 # # 3 3 6 7 6 5 6 7 6 4 #

Detailed description: This system contains six measures of music. The treble clef staff has whole rests. The bass clef staff has a melodic line with eighth and quarter notes. Fingering numbers are placed below the notes.

73

Org.

3 3 # 6/4 6 7 6 5 6 7 6 6 4 # 7 6 6 7 6 4 # # b

Detailed description: This system contains six measures of music. The treble clef staff has whole rests. The bass clef staff has a melodic line with eighth and quarter notes. Fingering numbers are placed below the notes.

Biber - Litaniae Lauretanae

79
Org.

6 # b 6 # 6 7 6 7 6 6 6 #6 5 # 5 6

86
Org.

b 6 6 6 5 b # 6 7 6 # 6 7 6 6 6 6 4 5

93
Org.

b # 6 # 6 6 6 6 5 4 3 6 6 6 6 5

98
Org.

6 4 5 # 6 5 3 6 4 4 3 # 4 4 # 6 # 6 6 6 5 # 6 5

Adagio

104
Org.

6 5 # 6 5 4 4 # 6 # 4 # b # 5 6 # 6 4 # # 5 3 4b 2

Adagio

111
Org.

4 2 5 3 4b 2 4 2 6 # 4 2 6 # 6 # 6

Biber - Litaniae Lauretanae

163 Adagio

Org. Adagio

6 6 6 6 6 # 6 7 # 4 # 6 6b 5 6 #

Detailed description: This system contains measures 163 through 168. The right hand (treble clef) is mostly silent, indicated by horizontal bars. The left hand (bass clef) plays a melodic line with various rhythmic values. The key signature has one sharp (F#). Fingerings are indicated by numbers 1-5 and accidentals like #, b, and natural signs.

169

Org.

4 3 6 6 6 6 6 # 1 1 1 6 7 # 7 # 6

Detailed description: This system contains measures 169 through 174. The right hand is silent. The left hand continues the melodic line. Measure 172 features a change in clef to treble for a few notes before returning to bass. Fingerings and accidentals are clearly marked.

175

Org.

#6 #5 # 6 7 6 4# # 6 4 3 1 1 6 6 6 6 6 # 1

Detailed description: This system contains measures 175 through 180. The right hand is silent. The left hand plays a melodic line with some chromaticism. Measure 179 has a treble clef change. Fingerings and accidentals are indicated throughout.

181

Org.

1 1 1 1 6 7 #6 6 7 #6 6 #6 #6 7 6 4 # # 1 3 #3 #

Detailed description: This system contains measures 181 through 187. The right hand is silent. The left hand plays a melodic line with some chromaticism. Measure 186 has a treble clef change. Fingerings and accidentals are indicated throughout.

188

Org.

6 3 2 9 8 4# # 6 # 7 6 7 # 6 6 4 #

Detailed description: This system contains measures 188 through 193. The right hand is silent. The left hand plays a melodic line with some chromaticism. Measure 192 has a treble clef change. Fingerings and accidentals are indicated throughout.

194

Org.

7 # 6 6 7 # 6 6 5 # # 6 b5 7 #

Detailed description: This system contains measures 194 through 198. The right hand is silent. The left hand plays a melodic line with some chromaticism. Measure 197 has a treble clef change. Fingerings and accidentals are indicated throughout.

199

Org.

6 7 # 4 # # 6 b5 5 4# #

Detailed description: This system contains measures 199 through 204. The right hand is silent. The left hand plays a melodic line with some chromaticism. Measure 203 has a treble clef change. The system ends with a double bar line. Fingerings and accidentals are indicated throughout.