

Christe qui lux es et dies

From an Antifonale in Det kongelige Bibliotek Slotsholmen,
København (Copenhagen), Source: København (Copenhagen), Gl. Kgl. S. 3449, 8o [04] IV, fol. 76-78.

C hris-te qui lux es

Chris - te qui lux es

et di-es noctis te-nebras de-

et di - es noc - tis te - ne - bras de -

te-gis lu-cisque lumen crede-ris

5

te - gis lu - cis - que lu - men cre - de - ris

lumen be - atum predicans

lumen be - atum predicans

P re-ca - mur sancte do-mi-

Pre - ca - mur sanc - te

ne de-fen-de nos in hac noc-te

do - mi - ne de - fen - de nos in hac

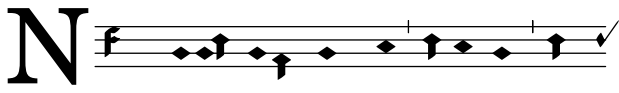
sit no-bis in te re-qui-es qui

5

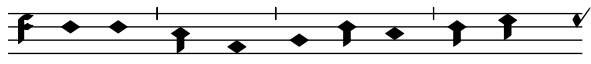
noc - te sit no - bis in te re - qui - es

e-ram noctem tribue.

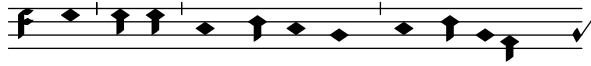
qui e - ram noctem tri-bu-e.



e gravis somnus irruat, Nec



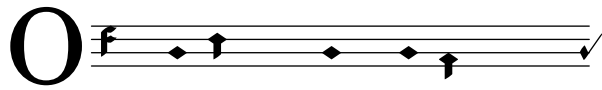
hostis nos sur - ri - pi - at, Nec ca -



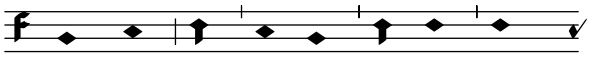
ro il - li consentiens, Nos ti - bi



reos statuat.



cu - li



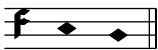
somnum ca - pi - ant, Cor ad te



semper vi - gi - let, Dex - te - ra tu - a



pro - te - gat Fa - mu - los qui te di -



ligunt.



Ne gra - vis som - nus ir - ru - at, Nec



ho - stis nos sur - ri - pi - at, Nec ca -



ro il - li con - sen - ti - ens, Nos ti - bi



re - os sta - tu - at.



O - - cu - li



som - num ca - pi - ant, Cor ad te



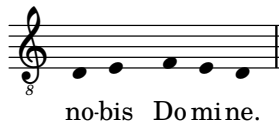
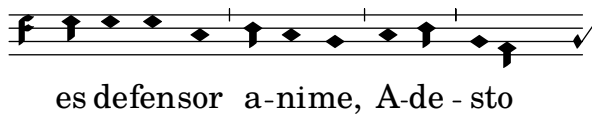
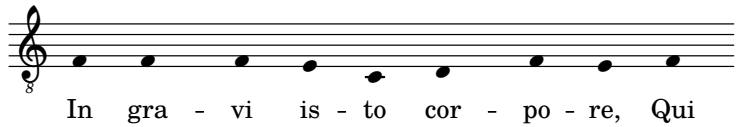
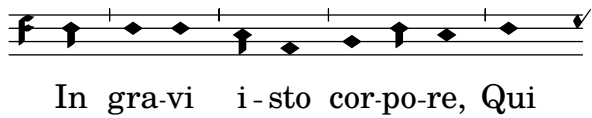
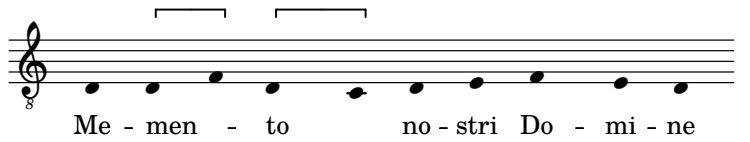
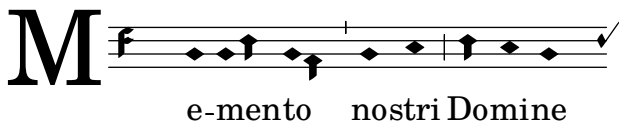
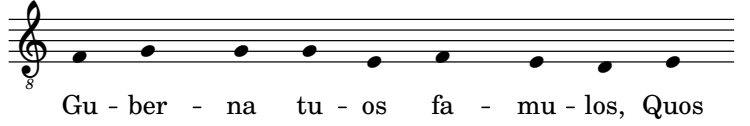
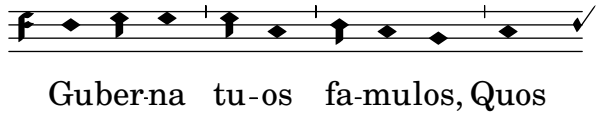
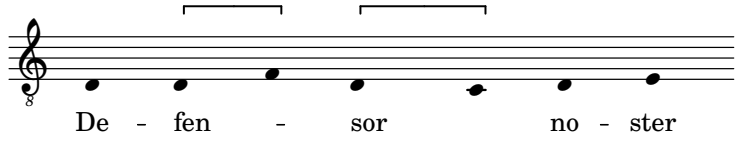
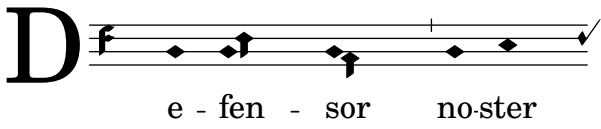
sem - per vi - gi - let, Dex - te - ra tu - a



pro - te - gat Fa - mu - los qui te di -



ligunt.



D e - o Pa - tri sit
 glo - ri - a, Ei - u - sque so -
 li Fi - li - o, Cum Spi - ri - tu Pa - ra -
 cli - to, Et nunc et in per - petuum.

De - o Pa - tri sit
 glo - ri - a, Ei - u - sque so -
 li Fi - li - o, Cum Spi - ri - tu Pa - ra -
 cli - to, Et nunc et in per - pe - tuum.