

Missa pro defunctis

by David Joseph Stith

Trombone

made available under a Creative Commons Attribution license
<http://creativecommons.org/licenses/by/3.0/legalcode>

Requiem

David Joseph Stith

Trombone  12

18  3 3

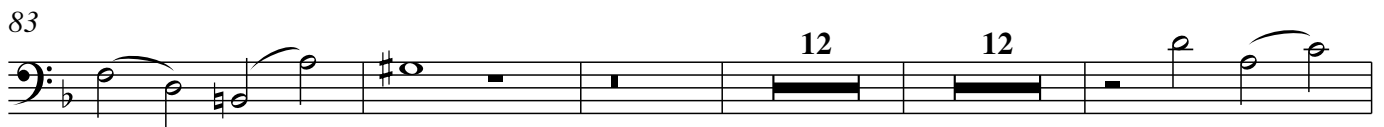
28  8

42 

50 

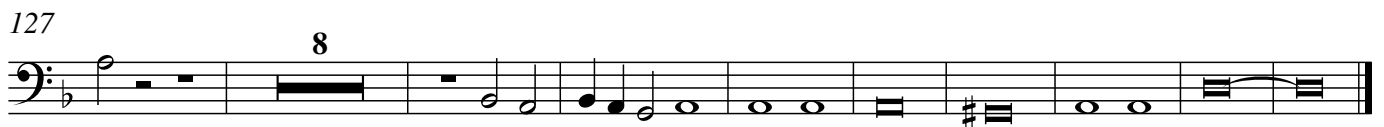
57  15

77 

83  12 12

111  3

119  3

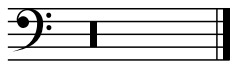
127  8

Kyrie eleison

David Joseph Stith

Tacet

Trombone



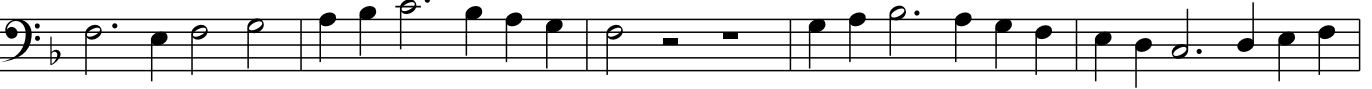
Dies irae

David Joseph Stith

Trombone



8



13



20



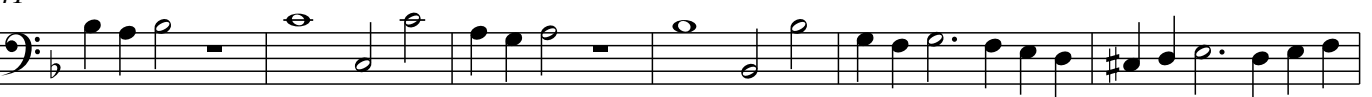
26



32



41



47



53



57



Tuba, mirum

David Joseph Stith

Trombone

2

8

14

21

3 2

29

8

41

47

51

13

Liber scriptus

David Joseph Stith

22

Trombone

29

22

58

64

71

78

22

107

p

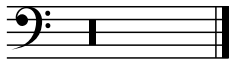
112

f

Recordare

David Joseph Stith

Tacet

Trombone 

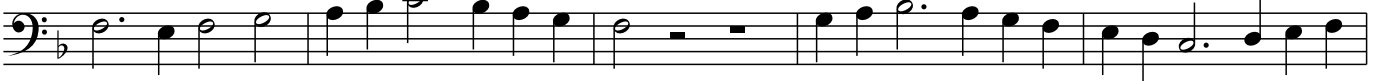
Lacrimosa

David Joseph Stith

Trombone



8



13



20



26



31



37



Domine Iesu

David Joseph Stith

Trombone

7

17

24

31

38

Sanctus

David Joseph Stith

Trombone

7

12

21

31

36

Agnus Dei

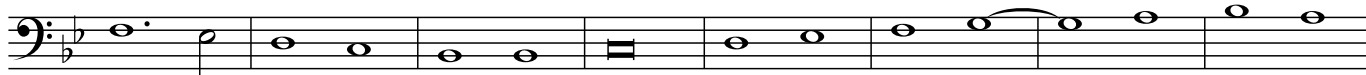
David Joseph Stith

Trombone



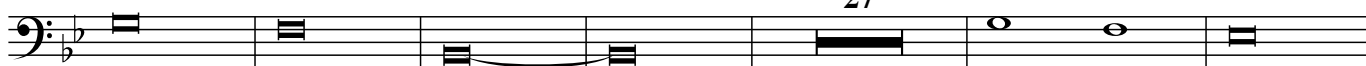
Musical staff for Trombone, measures 1-9. The staff is in bass clef with a key signature of one flat (B-flat) and a common time signature (C). The music consists of a series of notes and rests, including a whole note, a half note, and several quarter notes.

10



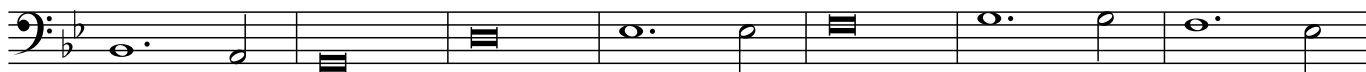
Musical staff for Trombone, measures 10-17. The staff continues the piece with a mix of quarter and eighth notes, some beamed together, and rests.

18



Musical staff for Trombone, measures 18-26. The staff features a series of chords and rests, with a measure number '27' written above the staff in the middle.

51



Musical staff for Trombone, measures 51-57. The staff continues with a sequence of notes and rests, including a half note and several quarter notes.

58



Musical staff for Trombone, measures 58-64. The staff concludes the piece with a series of notes and rests, ending with a double bar line.

Lux aeterna

David Joseph Stith

Trombone



Musical staff for Trombone, measures 1-7. The staff is in bass clef with a key signature of one flat (B-flat) and a common time signature (C). It begins with a double bar line and a repeat sign. The melody consists of quarter and eighth notes.

8



Musical staff for Trombone, measures 8-14. Measure 8 starts with a quarter rest. Measure 9 contains a whole rest with a '7' above it, indicating a seven-measure rest. The staff continues with quarter and eighth notes.

21



Musical staff for Trombone, measures 21-28. The staff continues with quarter and eighth notes, including a quarter rest in measure 25.

29



Musical staff for Trombone, measures 29-35. Measure 29 starts with a quarter rest. Measure 34 contains a whole rest with a '27' above it, indicating a 27-measure rest. The staff continues with quarter and eighth notes.

63



Musical staff for Trombone, measures 63-69. Measure 63 starts with a quarter rest. Measure 68 contains a whole rest with a '3' above it, indicating a three-measure rest. The staff continues with quarter and eighth notes.

70



Musical staff for Trombone, measures 70-77. Measure 70 starts with a quarter rest. Measure 71 contains a whole rest with a '3' above it, indicating a three-measure rest. The staff continues with quarter and eighth notes.

78



Musical staff for Trombone, measures 78-84. Measure 78 starts with a quarter rest. Measure 79 contains a whole rest with an '8' above it, indicating an eight-measure rest. The staff continues with quarter and eighth notes, ending with a double bar line.