

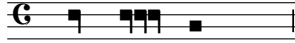
# GLORIA IN EXCELSIS DEO

*In die Natalis domini / docteur Cooper*

First Responsory, Matins for Christmas Day  
& 6th Day of Christmas, Sarum Use

ROBERT COOPER [COWPER] (ca.1470 - ca. 1540)  
Ed. MARK ARDREY-GRAVES

2 Clerks, 2nd Form

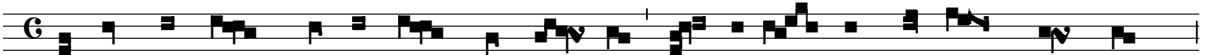


Ho - di - e \*

Choir [TB]



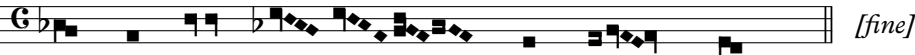
no - bis ce - lo rum rex de vir - gi - ne nas - ci dig - na - tus est :



ut ho - mi - nem per di - tum ad reg - na ce - les ti - a re - vo - ca ret



gau - det ex - er - ci - tus an - ge - lo - rum. † Qui - a sa - lus e - ter - na hu - ma no



ge - ne - ri ap - - pa - ru - it.

*Iste versus subsequens cantetur a quinque pueris in superpellicis et amictis albis,  
capitibus velatis, cereosque accensos singulis deferentibus in loco eminenti, scilicet ultra magnum altare*

TRIPLEX  
(Treble 1)

17803

MEDIUS  
(Treble 2)

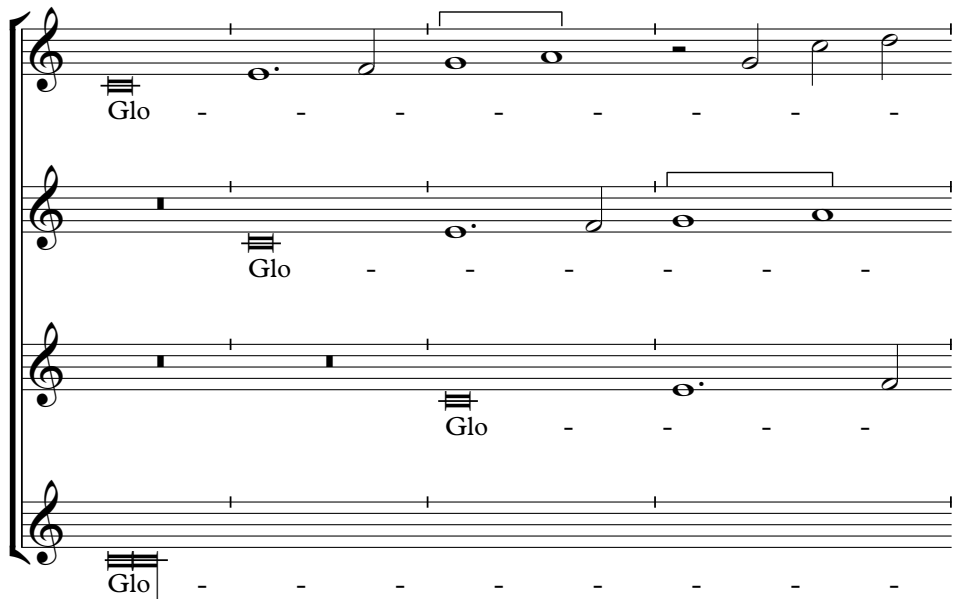
17802

CONTRATENOR  
(Treble 3)

17804

BASSUS  
(Alto)

17805



\* ♭ in partbook (this part only)  
 \*\* Change to G clef here in partbook

In ex - cel - - cis in ex - cel - - -  
sis De - - - - -  
sis De - - - - -  
ex - cel - - sis De - - -

-sis De - - - - -

- - - - -

Et in ter - - ra pax ho - mi - ni -  
 Et in ter - ra pax  
 Et in ter - ra pax ho -  
 Et in ter - - ra pax ho -

bus bo - - ne vo - lun -  
 ho - mi - ni - bus bo - - ne vo -  
 mi - ni - bus bo - - ne vo - lun - ta - -  
 mi - ni - bus bo - - ne vo - - lun - - ta -

ta - - - - -  
 lun - ta - - [tis]  
 - - - - -  
 - - - - - [tis]

- [tis] vo - lun - ta -  
 [vo - lun - ta] - - - - -  
 - - - - - [tis] vo - lun - ta - - - - -  
 [vo - lun - ta] - - - [tis] vo - lun - ta

- - - - -  
 - - - - -  
 - - - - -  
 ta - - - - -

- - - - - tis.  
 - - - - - tis. [†*Quia salus ad fine*]  
 - - - - - tis.  
 tis.